

U.S. Farmer

Sept.
2020

The Farm & Country Buyer's Guide

FARM BETTER - LIVE BETTER - 1000s OF SOLUTIONS INSIDE!

www.kalemktg.com • www.kalemktg.com • www.kalemktg.com

Kale Marketing

FARM & FERTILIZER EQUIPMENT

BLU-JET
BLU-JET

CASE III
APPLICATION EQUIPMENT

DUO LIFT
Manufacturing Company, Inc.

SEE OUR AD ON PAGES 2, 3 AND 4!



RICHWOOD, OHIO - 800-589-5253

BAUMALIGHT™

8 WEEKS SAVES 8%

Pre-order your Baumalight generator now for delivery in 8 weeks and get an 8% discount.

Contact: 1-866-820-7603 | BAUMALIGHT.COM

Or find a dealer Online



REACHING FARMERS & RURAL LANDOWNERS ACROSS OHIO & KENTUCKY

GREAT DEALS ON **BLU-JET** IN STOCK!



SUBTILLER 4™
Rigid Frames, 5 Shanks

SubTiller 4 - Lifts & Fractures Hardpan & Wheel Compaction Caused By Heavy Equipment. 14"-18" Operating Depths



LANDRUNNER II™
Fertilizer Injection Applicator

Outperforms & Outlasts The Competition. Heavy 4"x6" Tubular Framework Gives You The Strength To Tackle Any Terrain. Highly Versatile Row Spacing Capabilities Meet Your Needs In Virtually Any Application.



TRACKMASTER II™

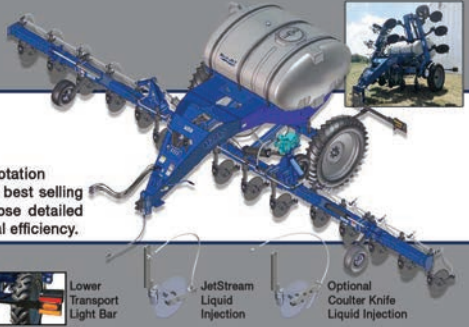
"Vee" Design Moves The Soil To The Center For A Smooth, Finished Soil Profile

BLU-JET All Terrain Injection **AT3015**

THE MARKET'S BEST JUST GOT BETTER

The BLU-JET AT3015 integrates many of the features, such as high flotation tires and bottom fill plumbing, that made its predecessor one of the best selling liquid applicators on the market. It further adds items, such as those detailed below, aimed at making it even easier to use for enhanced operational efficiency.

Gain Efficiencies in the Field and In Your Budget



Pin Adjust Gauge Wheels



Gear Reduction Jack



Hydraulic Hose Holders



Lower Transport Light Bar



JetStream Liquid Injection



Optional Coulters Knife Liquid Injection



AT3015
Rugged Toolbar and Mounting Dual 3 x 8 Lift Cylinders With Depth Setting Spacers
3 x 20 Wing Fold Cylinders Positive Contact Drive Mount Bottom Fill Plumbing



AT4015
1400 gallon (5300 L) Cone Bottom Tank Outer Wing Folds Up For 11R30 (76 cm) Operation Exclusive Jet Stream Row Unit High Pressure Direct Injection or Coulters Knife Injection Easy Access To 3" (76 mm) Bottom Fill Plumbing



AT4615
Single 380/90R46 Tires Outer Wing Folds Up For 17R30 (76 cm) Operation Exclusive Jet Stream Row Unit High Pressure Direct Injection or Coulters Knife Injection Easy Access To 3" (76 mm) Bottom Fill Plumbing



AT6020 Fertilizer Injection Applicator Commercial Class Fertilizer Injection Applicator

- Heavy Duty, 6x6 Mainframe
- Row Options Include: PrePlant, Side Dress & Strip-Till Operations
- Placement Options Include: NH3, Liquid And Dry
- Swath Widths: 40' To 62.5' In 15", 20" Or 30" Rows, 16R30 To 25R30 Sizes
- High Flotation Tire Options

Kale Marketing

FARM & FERTILIZER EQUIPMENT

RICHWOOD, OH
800.589.5253
www.kalemktg.com

EASTERN OHIO
Nick Heimlich (740) 360-4783

WESTERN OHIO
Eric Winner (614) 374-8722

NORTHERN OHIO
Ed Maas (419) 217-1639

MICHIGAN
(800) 589-5253

INDIANA FARM ONLY
(800) 589-5253

CALL FOR ALL YOUR NURSE TRAILER NEEDS



Duo Lift TD1200,
1,200 Gal. Cone Bottom,
12.5x15 10-Ply Tires &
Wheels w/Pump & Plumbed

Duo Lift TD1000,
1,000 Gal.,
11x15 Tires
& Wheels w/Pump
& Plumbed



DUO LIFT Manufacturing Company, Inc.

Duo Lift LBI
Universal Low Boy,
NH3 Wagon,
Fits Twin 1,000 Gal. Tanks
Or 1,450 Gal. Tank
w/Adjustable Rear Axle

Duo Lift M2200,
NH3 Wagon For
Rugged Use Under
Severe Conditions,
16.1x11 Wheels



**ONE MACHINE.
TWO APPLICATIONS.
THREE SEASONS.**



**CHANGE OVER IN
LESS THAN 1 HR!**

TRIDENT™ 5550
LIQUID/DRY COMBINATION APPLICATOR

Introducing the new Case IH Trident™ 5550 liquid/dry combination applicator - the industry's fastest converting combination applicator on a row-crop chassis. It's engineered from the ground up to switch between liquid and dry applications through three seasons of use. Automatic and in-cab adjustments such as load-compensated suspension and independent axle adjustments, help reduce operator fatigue and increase productivity. And three seasons of use during pre-plant, post-emerge and post-harvest increase your ROI. To learn more about the new Case IH Trident 5550, visit us today or go to casseih.com/fast



All rights reserved. Case IH is a trademark registered in the United States and many other countries, owned by or licensed to CNH Industrial N.V., its subsidiaries or affiliates. www.casseih.com



Kale Marketing

FARM & FERTILIZER EQUIPMENT

RICHWOOD, OH
800.589.5253

www.kalemktg.com

EASTERN OHIO
Nick Heimlich (740) 360-4783

WESTERN OHIO
Eric Winner (614) 374-8722

NORTHERN OHIO
Ed Maas (419) 217-1639

MICHIGAN
(800) 589-5253

INDIANA FARM ONLY
(800) 589-5253

**WHEN WE SAY
LESS WEIGHT,
WE MEAN
LESS WAIT.**

Your business demands the impossible: create more hours in a day during short application windows. We can't change time, but we've done the next best thing — widened application windows and increased uptime with Case IH Patriot series sprayers. Get into wet fields sooner with balanced weight distribution. Reduce rutting and soil compaction in customers' fields with a lighter footprint, the equivalent of 860 gallons of water lighter compared to the leading competitor.* Get the most out of every tank of fuel and decrease maintenance downtime — including 600-hour oil change intervals — with Case IH Efficient Power technology and patented SCR-only solution. Provide customers with consistent, accurate coverage over a wide range and varying weather conditions with AIM Command® advance spray technology. And stay running at peak performance with extended in-season hours from a dedicated support team. See your Case IH distributor or visit cashi.com/weight.



SEE US TODAY!

*The information shown is believed to be accurate at the time of publication and has been gathered via the respective company's website or other publicly available printed material. The data is limited to each company's self-propelled sprayer offering in the 1,200+ gallon tank capacity segment and equipped with 120' spray booms. Data subject to change without notice.



All rights reserved. Case IH is a trademark registered in the United States and many other countries, owned by or licensed to CNH Industrial N.V., its subsidiaries or affiliates. www.casseih.com



WE HAVE LANDRUNNER TOOLBARS TO LIQUIDATE!



(1) LANDRUNNER II, 13 row 30" single 12.5 X 15" tires on 8 bolt wheels, SCS spring bundles, edge bent shanks, Super 1200 no till coulters, SEAL PRO II disc sealers with 17" wavy blades, quick coupler with dual impellicone manifolds, no knives, meter or control system. You can add what you want. **AS IS CONDITION. THESE ARE NEW OLD STOCK TOOLBARS, 2014 MODELS.**

WAS \$33,680 | NOW \$22,000



(2) LANDRUNNER II, 15 row 30", deluxe fold, single 12.5 x 15" tires on 8 bolt wheels, SCS spring bundles, edge bent shanks, Super 1200 no till coulters, SEAL PRO II disc sealers with 17" wavy blades, quick coupler with dual impellicone manifolds. No knives, meter or control system, you can add what you want. **AS IS CONDITION. THESE ARE NEW OLD STOCK TOOLBARS, 2014 MODELS.**

WAS \$40,010 | NOW \$26,500



(1) LANDRUNNER II, 15 row 30", deluxe fold, walking tandems, with 11 x 15" tires on 6 bolt wheels, SCS spring bundles, edge bent shanks, Super 1200 no till coulters, SEAL PRO II disc sealers with 17" wavy blades, quick coupler with dual impellicone manifolds. No knives, meter or control system, you can add what you want. **AS IS CONDITION. THESE ARE NEW OLD STOCK TOOLBARS, 2014 MODELS.**

WAS \$46,450 | NOW \$28,500



\$10,000

2011 Blu-Jet BT conquest, 9 shank auto reset, with rolling basket. Number of shanks: 9 Shank spacing: 15 Shank type: auto reset



\$117,500

2010 GVM PROWL Combo unit - New Leader L3220G4 12' bed. 1600 gal liquid unit with 90' booms, RGL600 lightbar, SmarTrax, Ag Leader Insight, NORAC autoboom height. Rental machine.



\$90,000

2014 Titan 4030, 3025 hours, auto steer, Viper Pro, L-4000 new leader bed.



\$25,000

2014 BLU-JET MODEL 2330 commodity cart, with 1000/50r25 floater tires & 380/85r46 row crop tires

Kale Marketing
FARM & FERTILIZER EQUIPMENT
 RICHWOOD, OH
 800.589.5253
www.kalemktg.com

EASTERN OHIO
 Nick Heimlich (740) 360-4783
WESTERN OHIO
 Eric Winner (614) 374-8722
NORTHERN OHIO
 Ed Maas (419) 217-1639
MICHIGAN
 (800) 589-5253
INDIANA FARM ONLY
 (800) 589-5253

See the Whole Store at www.wilsons tires.com



UPPER SANDUSKY
300 N. WARPOLE ST.

TIFFIN
1775 S. CR 1

KENTON
14889 ST. HWY. 31

1-800-686-9279



Heavy Duty Wheels Won't Crack

11.75x22.5 8 Bolt Wheel w/385 OR 425 65R22.5 Tire
\$295 Ea.

NEW & USED

(4) 21x46 Stub disc John Deere Wheels, Fits 620/70R46	\$850 Ea.
(4) 13 x 50 JD stub disc	\$950 Ea.
(4) 12x50, Hagey, 10bolt	\$600 Ea.
18x42 John Deere Combine wheels	\$750 Ea.
25x42 John Deere Wheels stob disc & 10 bolt & Case IH	\$650 Ea.
(6) 13x46 12-bolt John Deere fits 49 series	Call for price
(4) 480/80R50 GY on JD stub disc, 100%	\$10,600
(4) 28x42 JD Stub Disc wheel	\$600 Ea.
(6) 13x46 JD 12 Bolt	\$1,100 Ea.
(4) 12x54 Case 10 bolt wheels	\$400 Ea.
(2) 710/70R42 Continental, 95%, 2 tires have little stubble	\$2,000 Ea.
(8) 520/85R32 Carlisle 100%	\$1000 Ea.
(8) 710/70R38 Carlisle, FSTR, Radial	\$1,395 Ea.
(4) 650/65R38, Carlisle FSTR, Radial	\$1,375 Ea.
(2) 600/70R30, Carlisle, FSTR, Radial	\$1,070 Ea.
(3) 340/85R28 Carlisle, Radial	\$450 Ea.
(4) 600/65R38 Carlisle, Radial	\$1,090 Ea.
(3) 420/85R34 Carlisle, Radial	\$550 Ea.
(2) 750/85R26 Carlisle, FSTR Radial	\$1,450 Ea.
(4) 480/80R42, Carlisle Radial	\$800 Ea.
(2) 620/75R26, Goodyear	\$850
..... extra \$100 for 8 bolt JD wheel	
(2)620/70R26 Michelin Cerehib	\$2,000
..... Extra \$100 for 8 bolt JD wheel	
(3) 320/85R38, Michelin, 70% Tread	\$1,000
(1) 320/90R54 Michelin Agribib RC, 85% Tread	\$1,300
(1) 520/85R42 Firestone DT	\$1,500
(2) 16.9x24, Firestone, DT. 90%	\$275 Ea.
(1) 750/65R26, Goodyear, 45%	\$450
(4) 320/90R54 Michelin Agribib RC 85% Tread	\$1,300 Ea.
(1) 380/80R38 Goodyear 95%	\$1,300
(1) 380/80R38 Continental Takeoff	\$1,000
(4) 12x54 Case 10 Bolt Wheels	\$400 Ea.
(2) 620/75R30 Goodyear Optitrac, spot repairs	\$1,400
(4) 480/80R50 Goodyear	2 @ \$900 (70%) & 2 @ \$1,150 (80%)
(1) 900/60R32 Continental 90% Vulcanize	\$1,750
(2) 520/85R42 Firestone 75%	\$1,250 Ea.
(4) 520/85R42 Firestone 65-70%	\$1,000
(4) 420/85R34 Firestone 80-90%	2 @ \$600 & 2 @ \$800
(1) 600/70R30, Firestone, Maxi Traction, 95%	\$1,250
(4) 650/85R38, Firestone, 85%	\$1,950 Ea.
(4) 650/85R38, Goodyear, 97%	\$2,000 Ea.
(2) 380/85R34, FS, 97%	\$700 Ea.
(1) 14.9R30, FS, 90%	\$750
(1) 14.9-30, Titan	\$300
(2) 320/85R38, FS, 90%	\$950
(2) 620/70R26 Mich. Cerex, 100% On JD, 8 Bolt set	\$4,500
(2) 420/85R38 FS DT (153 LI), 95%	\$1,300 Ea.
(1) 480/80R46 BKT 90%	\$800 Ea.
(4) 480/95R50 Mich. Agri Bib, 100%	\$3,600 Ea.
(8) 380/85R34 Radar 100%	\$650 Ea.
(8) 620/70R42 Firestone, 90%	\$1,800 Ea.
(1) 480/80R50 Firestone 70%	\$1,300 Ea.
(4) 380/105R50 Firestone RC 95%	\$2,500
(2) 480/80R50 Titan, 70%	\$850 Ea.
(4) 480/80R50 Goodyear, 65-70%	\$1,100 Ea.
(4) 480/80R50 Titan, 100%	\$1,750 Ea.
(1) 1000/50R25, Michelin, 25%	\$950
(1) /65R26, Michelin, 50%	\$950
(1) 710/65R46, 40%	\$1,000
(2) 540/65R30, Michelin, 100% (16.9R30, High, 21" Wide)	\$1,650 Ea.
(2) 710/70R38, GY, 60%	\$1,000 Ea.

TRACKS

(1) 8RT 30" Camso 55%	\$2,900
(1) 8RT 30" Camso 40%	\$1,700
(2) 320x52x86 OEJD 90%, Skid Steer	\$850 Ea.
(1) 30" Camso 8RT JD 85%	\$7,000

SPRAYER SETS

(4) 480/80R50 GY On JD Stub Disc, 100%	\$10,600
(4) 320/105R54 GY On JD 12 Bolt, 65%	\$10,000



TREE SAWS & SHEARS FOR MANY CARRIERS



BAUMALIGHT™

**FACTORY
DISCOUNTS**
Check Online

BAUMALIGHT.COM

KENTUCKY | Dan Thorne 615-948-1406 | dan@thornesales.com

OHIO | Scott Morrison | 724-316-9407

MFG OF A VARIETY OF ATTACHMENTS INCLUDING
BRUSH MULCHERS | ROTARY BRUSH CUTTERS | TRENCHERS
STUMP GRINDERS | PTO GENERATORS | AUGER DRIVES
DRAINAGE PLOWS | TREE SPADES | TREE SAWS & SHEARS
BOOM MOWERS | TREE PULLERS | FELLER BUNCHERS
EXCAVATOR ADAPTORS | SCREW SPLITTERS



TRUCK BEDS

TRUCK BEDS • PARTS • INSTALL

BEDROCK

\$3,380



Bedrock truck bed
Limestone 12' flatbed
platform body

Bradford Built

\$2,350



84"x 84"
Bradford built
Mustang Short Bed

Bradford Built

\$4,950



84"x103" Bradford built
aluminum 4-box utility skirted

BEDROCK

\$2,760



84"x102"
Bedrock
Diamond Series
bed

ALUMAX
BODIES

\$6,950



96"x112" Alumax skirted vertical
box flatbed 60" cab & chassis

IN STOCK

Bradford Built

\$2,950



84"x102"
Bradford
workbed

\$7,440



96"x112"
Contractor dump body
all aluminum

IN STOCK

BEDROCK

~~\$7,663~~



NOW \$6,950!

94"x112 Bedrock truck
beds Marble Series

IN STOCK

We carry: **BEDROCK**



Bradford Built



330.933.7526 • ALETRUCKBEDS.COM • DALTON, OH

Barn/Livestock Equipment

ALE Truck Beds	7
Cowherd Equipment, Inc.	29
ESB Aluminum	47
Nu-Matic Spread-Rite	42
Reveal 4-N-1 LLC	16

Building & Building Supplies

JBC Metals	40
----------------------	----

Classifieds

Construction & Heavy Equipment

Craigmyle Farm Equipment	49-52
Little's Farm Supply	10, 11
Todd Schaeffer	12, 13

Drainage Contractors

Todd Schaeffer	12, 13
--------------------------	--------

Forestry & Woodlot

Baumalight	6
----------------------	---

Generators/Solar Power

Baumalight	6
----------------------	---

Grain & Feed Handling

Cowherd Equipment, Inc.	29
Greg Sharrock	42
Nu-Matic Grind-Rite	14

Hay and Forage

Cowherd Equipment, Inc.	29
Powder Mills Equipment	14

Lawn/Garden/Power

Ricer Equipment	43
---------------------------	----

Parts & Repairs

Bryant Combine Parts LLC	32, 33
------------------------------------	--------

Media & Publishing

US Farmer FREE	
Subscription	47

Planting, Seeding & Tillage

Born Implement	18-25
Craigmyle Farm Equipment	49-52
Kale Marketing	2-4
Koehler Implement	46
Little's Farm Supply	10, 11
Polen Implement	17
Powder Mills Equipment	14
Reitzel Ag Equipment	30
Reveal 4-N-1 LLC	16
S.I. Distributing Inc.	36
Sorensen Equipment	35
Wright Implement	26, 27

Precision Ag

Ag Express Electronics	44
Genesis Ag	37
Kale Marketing	2-4
S.I. Distributing Inc.	36

Shows & Events

Farm Science Review	28
-------------------------------	----

Skid Steers/Attachments

Harleman Manufacturing	34
----------------------------------	----

Tires

Wilson Tire Company	5
-------------------------------	---

Tractors & Attachments

ALE Truck Beds	7
Born Implement	18-25
Craigmyle Farm Equipment	49-52
Koehler Implement	46
Kubota	9, 45
Little's Farm Supply	10, 11
Polen Implement	17
Powder Mills Equipment	14
Reitzel Ag Equipment	30
Ricer Equipment	43
Roberts Farm Equipment	39
Sorensen Equipment	35
Wright Implement	26, 27

Trailers

ALE Truck Beds	7
Wholesale Trailers	38

Trucks

ALE Truck Beds	7
Dixie Diesel	41
Reiselt's Machine Works	31

ADVERTISERS:
Booking deadline for
our October 2020
edition is September 21.
Contact us today to
reserve your spot.

Proud Supporter of



U.S. Farmer magazine connects farmers and rural landowners to the products, services and machinery they need. Now reaching farms across Ohio and Kentucky, with distribution in Indiana, Tennessee and Illinois.

We're the Buyer's Guide for Farm & Country Life.

National Sales Manager:

Paul Nolan
 (888) 531-1511 x202
 paul.nolan@farms.com

Sales Manager:

Diana Risley
 (888) 531-1511 x910
 diana.risley@usfarmer.com

Sales Team:

Scott Farhood
 (888) 531-1511 x277
 scott.farhood@farms.com

Jennifer Longstreet
 (888) 531-1511 x256
 jennifer.longstreet@farms.com

Jeff McKee
 (888) 531-1511 x917
 jeff.mckee@farms.com

Samantha Renaud
 (888) 531-1511 x257
 samantha.renaud@farms.com

Farms.com Sales


Andrew Bawden
 (888) 531-1511 x5013
 andrew.bawden@farms.com

Larry Stoller
 (888) 531-1511 x279
 larry.stoller@farms.com

Mailing Address: 195 Raymond Hill Road, Suite D, Newnan, GA 30265

Subscriptions: Sign up at usfarmer.com to receive U.S. Farmer Magazine delivered to your mailbox 12 times a year. That's a Brand New Issue every month!
 © 2020 U.S. Farmer is published by: U.S. Publishing, Inc. A Farms.com Company

US Farmer attempts to verify that claims in advertising adhere to industry standards. However, publishers assume no responsibility for accuracy and validity of claims.



There are many jobs. And one tractor to do them all.

BX Series 16.6-24.8 HP Easy operation



Call today to schedule a demo on the versatile #1 selling sub-compact tractor in the U.S. for over 10 years.*

- Variety of available attachments
- Swift-Tach Loader makes switching attachments easy
- Easy-to-use hydrostatic transmission
- ROPS height fits easily in standard size garages

Together we do more.

Ricer Equipment - Lucasville, OH
49 Good Manor Road Lucasville, OH 45648
www.Ricerequipment.com
740-289-4318

Ricer Equipment - Jackson, OH
486 Burlington Road Jackson, OH 45320
www.Ricerequipment.com
740-288-4318

Bane-Welker Equipment - Eaton, OH
1980 US Route 35 East Eaton, OH 45320
www.Bane-welker.com
937-456-6281

Bane-Welker Equipment - Georgetown, OH
9762 U.S. 68 Georgetown, OH 45121
www.Bane-welker.com
937-378-4880

Bane-Welker Equipment - Wilmington, OH
3025 Progress Way Wilmington, OH 45177
www.Bane-welker.com
937-382-0941

Green and Sons - Sterling, OH
12350 St. Rt. 56 SE Mt. Sterling, OH 43143
www.Greenandsons.com
740-852-2205

Green and Sons - Raymond, OH
18987 St. Rt. 347 Raymond, OH 43067
www.Greenandsons.com
937-553-3999

Evolution Ag - Delaware, OH
5565 St Rt 37 E Delaware, OH 43015
www.Evolutionagllc.com
740-513-4842

Evolution Ag - Circleville, OH
21224 US Rt 23 N Circleville, OH 43113
www.Evolutionagllc.com
740-474-2181

Evolution Ag - Sandusky, OH
OPE 375 Malabar Dr Upper Sandusky, OH 43351
www.Evolutionagllc.com
419-209-3876

KubotaUSA.com

*Based on EDA tractor sales data of under 20 horsepower models from 2009 to 2019.

© Kubota Tractor Corporation, 2020. This material is for descriptive purposes only. Kubota disclaims all representations and warranties, express or implied, or any liability from the use of this material. For complete warranty, disclaimer, safety, incentive offer and product information, consult your local Dealer or go to KubotaUSA.com.



www.littlesfarmsupply.com | (937) 288-2318
4141 State Route 138, Lynchburg, OH 45142



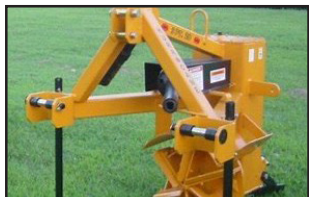
NEW REMLINGER 400-CC POWER DITCHER (Rep photo)..... CALL



1986 CASE IH 1660 Combine, great condition..... \$27,500



1939 OLIVER 99 Tractor, really nice, new tires..... \$15,000



2017 HURRICANE 3PT20 DITCHER (Rep Photo)..... \$5,750



2019 LANDOLL 5531 No-Till Grain Drill..... Call



1948 OLIVER 80, runs / operates good..... \$10,000



2011 BRENT 1282 Grain Cart, good cond.....\$52,500



1949 OLIVER 77, gas, runs good..... \$3,500



1996 Case 580L Backhoe good condition..... \$22,500



1985 STEIGER CR-1225 4wd, PTO..... \$45,000



1945 INTERNATIONAL FARMALL M Tractor..... \$1,850



INTERNATIONAL 490 Disc, good condition..... \$7,500



1976 J1 Case 2670 Tractor PTO and 3 PT Hitch..... \$11,500



1997 CASE IH 30 ft. Grain Head..... \$7,500



2020 BUSH-WHACKER MD-180, 15', Laminated Tires, Deck Rings.... \$14,900



www.littlesfarmsupply.com | (937) 288-2318
4141 State Route 138, Lynchburg, OH 45142



1983 CASE W20B Wheel Loader, Runs Good, Operates Good, No Major Leaks \$22,500



NEW BRENT 678XL Grain Cart, roll tarp Call for Price



UNVERFERTH Rolling Harrows, many in stock Call



1953 FARMALL Super H, really nice, early s/n \$3,950



2001 CASE IH MX240 Tractor, great condition, low hours \$80,000



2017 UNVERFERTH 3750XL Seed Tender, II Call Rick For Special Price



1973 J I MCFARLANE 32 ft. Reel Disc, very good cond. \$32,500



INTERNATIONAL 6000 Disc Chisel . . . \$4,850



UNVERFERTH BRENT 1282 Grain Cart, 1200 bu. capacity, rolling tarp, light kit \$52,500



1979 GMC FIELD GYMMY 2000 Tank Truck \$8,500



1973 J I CASE 1070 TRACTOR uns good. \$8,750



2002 SUNFLOWER 9412-15 Grain Drill \$19,500



2019 BRILLION BPSB6 No Till Seeder, 6 ft. Call



2020 TOP AIR ATV 200 Gal Sprayer, Honda 5.5 hp engine, 60 ft. man fold booms, 3 section Call



1987 CATERPILLAR 211LC EXCAVATOR \$22,500



2019 LANDOLL 5531 Grain Drill, 30 ft. no-till. Call



2011 BRENT 678 grain cart \$19,500



1979 JOHN DEERE 2840 TRACTOR new clutch, new hyd. pump \$14,900



JOHN DEERE 520 GRAIN DRILL w/ Donahue trailer \$4,750



UNVERFERTH PERFECTA FIELD CULTIVATORS many in stock ... Call



1994 BRILLION 25 ft. X-Fold Packer \$7,500



2004 CASE IH 4300 FIELD CULTIVATOR great cond... \$15,500



Maverick Tile Finder Pkg
 Locate Tile & Utilities, 3/8" dia. 650ft, depth 30ft accuracy to 1". New Model V2 Rod w/Locator



Maverick Mini Rodder
 - 3/16" dia, approx. 150ft
NEW!



Maverick Power Assisted Rewind
 - add to New or Existing Max Unit
NEW!



Max Reel
 7/16" dia approx. 950 ft
NEW!



TopCon RL-SV2S Dual Slope w/Receiver and Remote, Case, Rechargeable Battery, 1/16" Accuracy, 5yr Warranty FREE TRIPOD & STICK
 • call for price



Topcon RL-H5B Laser w/Receiver, Case, Dry Battery, 5yr Warranty Free Tripod & 8' Stick
 • call for price



Futtura LT-850, Single Slope, Case, Rechargeable Battery, 1/16" Accuracy, 2yr Warranty, FREE TRIPOD & STICK
 • call for price



Futtura Machine Control Boxes & Receivers, Built By Apache, Available For All Applications
 • call for price
 • 2 year warranty

LET US HELP YOU WITH MACHINE CONTROLS - GPS or LASER! CALL TODAY!



Tile Probes and Tile Cutters. Call for Details and Pricing!



Call For Details



Holcomb Box Scraper



Art's Way 6 Way Blade 12'-16' Available



Holcomb 800 Scraper



Holcomb Ejection Scrapers 8 - 20 Yards, Dolly & Direct Hitch

Todd Schaeffer Equipment LLC

(419) 845-2807 • www.TSEQUIP.com

4300 Morral-Kirkpatrick Rd E Marion, OH 43302



We Ship Daily!





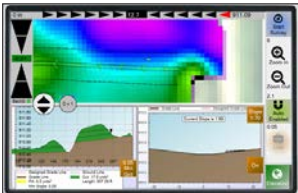
Crary Tile Plows

Crary Stringer Trailer



Crary Revolution Ditcher

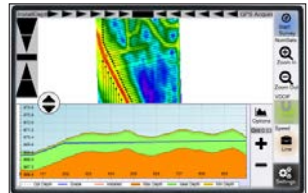
Crary Trench Pro



SD Drain Ditch Software



Outback A320/A321 RTK



SD Drain Tile Software

GPS Software using Outback Guidance or your own RTK

Todd **Schaeffer**
Equipment LLC

(419) 845-2807 • www.TSEQUIP.com

4300 Morral-Kirkpatrick Rd E
Marion, OH 43302



We Ship Daily!



POWDER MILLS

FARM EQUIPMENT, LLC

270-528-2583

1555 POWDER MILLS RD.
MAGNOLIA, KY. 42757



IH 706 Diesel, W/F, duals, Flat fenders, 3pt, dual HYD, dual PTO...
..... Call for info



1980 Case IH 2290, 128hp, c/h/a, 20.8x38, 2 pto, 2 hyd, power/shift trans\$14,500



AC 7000 diesel tractor, 106 HP, ROPS w/ canopy, good 38" tires, dual pto, dual hyd.....\$7000



New Holland 256 5 bar hay rake w/ dolly, waiting for a tire!\$2800



New Idea 12' rotary mower, good condition, 540 rpm shaft...\$1400



Degelman 570 rock picker, ground driven reel\$4500



John Deere 12' cultimulcher, inboard transports, hyd cyl, very good condition.....\$3000



Highline 3pt rock rake, 540 pto, very little use.....\$5500



IH 656 tractor w/ loader, runs and operates well. Good 15.5x38 tires, narrow front, good T/A, flat fenders, hyd bucket on loader.....\$5500



New Holland 462 disc mower, good running condition, 540 rpm, will have new tarp.....\$3500



Degelman 570 rock picker, ground driven reel, good condition\$4500



1981 Komatsu D65E Dozer, P/S, very good U/C U/C, tilt blade, ROPS, w/ sweeps.....Call for more info

www.powdermillsfarmequip.com www.powdermillsfarmequip.com www.powdermillsfarmequip.com



www.spreadrite.ca

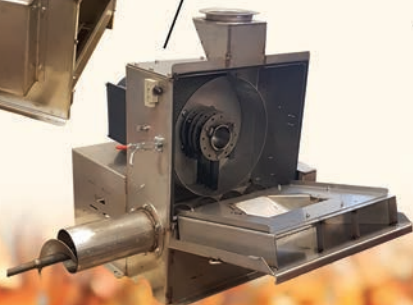
STAINLESS STEEL GRINDER HAMMERMILL

Grind high moisture or dry corn and grains efficiently



Tension Latches and Safety Switch

- Available in 7.5 or 10 Horse Power
- 3.5" or 6" Discharge Auger
- 18" Diameter Screens
- 3/32" up to 3/4" Holes
- Tension latches and safety switch for quick, easy, and safe servcability
- Adaptable to computerize batch systems or pre-grinds, etc.



519-669-5064

ELMIRA, ONTARIO CANADA

OVER 35 YEARS OF SERVICE

www.numatic.ca



VIRTUAL

PRECISION AGRICULTURE

CONFERENCE

& AG TECHNOLOGY SHOWCASE

NOVEMBER 17-19 | 2020



KEYNOTE SPEAKERS



MITCH BROWNLIE
DIRECTOR
FIELDMICRO



RAJ KHOSLA
PROFESSOR OF PRECISION AGRICULTURE
COLORADO STATE UNIVERSITY



ERIC LALIBERTÉ
DIRECTOR GENERAL SPACE UTILIZATION
CANADIAN SPACE AGENCY



JOHN HARNETT
CEO & FOUNDER
SVG VENTURES

ARE YOU INTERESTED IN OPTIMIZING RETURNS ON INPUTS WHILE PRESERVING RESOURCES, REDUCING COSTS AND REDUCING WASTE, ALL WHILE IMPROVING YIELDS AND MINIMIZING FARMING ENVIRONMENTAL IMPACTS TO THE LAND?

REGISTER OR LEARN MORE



[FARMS.COM/VPAG](https://farms.com/vpag)



PRECISIONAG@FARMS.COM



888.248.4893 X 255

REVEAL 4-N-1

- Horse Arenas • Agricultural
- Driveways • Erosion Repair
- Waterways • Grading and Leveling
- Ballfield Maintenance



the Original... Still the Best

937-444-2609

www.reveal4-n-1.com

Mt. Orab, Ohio 45154



JOHN DEERE

Polen Implement

POLEN

IMPLEMENT



2016 John Deere S670
1301 Hrs., One Owner,
Well Equipped / Maintained
Autotrac, Folding Bin Ext.,
Prodrive w/Harvest Smart
Feed Rate Control, Active
Yield Calibration, Duals
\$239,000



1965 Cockshutt 1950 Tractor
One Of 500 Made, 4695 Hrs.,
Excellent Rubber & Engine
\$19,000



1997 John Deere 7710 Tractor
16 Speed Partial Power Shift,
3 Remotes, Block Heater
\$65,000



2008 JD 4830 Sprayer
15', 100' Boom, 2600 Display,
AutoTrac, Swath Control
\$95,000



2011 J&M 1000 Grain Cart
Roll Tarp, Camera, 1025 Bu,
Always Stored Inside
\$29,500



2019 JD 4066R Tractor
138 Hrs., Cab, Loader w/Pallet
Fork Attachment, Warranty
\$45,900



NEW John Deere XUV835R
Camo, Power Steering, Deluxe
Cab With A/C & Heat
\$26,500



H&S 3123 Manure Spreader
235 Bu, Hyd End Gate
Upper/Lower Beaters
\$15,100



2016 JD 8320R Tractor
1820 Hrs., E23 Speed, Prem.
Cab w/Susp., Good Condition
\$194,900



2014 JD 1770NT Planter
2800 Acres, 12 Row w/Liquid
Fertilizer, Keeton Seed Firmers
\$69,500

More NEW and USED Inventory Online at

www.PolenImplement.com

866-542-5625 | 440-322-7064



JOHN DEERE



42255 Oberlin-Elyria Road | Elyria, Ohio 44035

Celebrating Over 50 Years!

BORN IMPLEMENT

12747 Vermilion Rd., Amherst, OH 44001
2 Miles North of Kipton OH

WWW.BORNIMPLEMENT.COM

phone: (440) 965 5675 | toll free: (844) 692-0299



CASE IH 2388

24.5x32, 14.9x24, 2wd, dual spreader,
3175 eng, 2250 sep hours, clean
\$37,500



JOHN DEERE 9600

5123 engine hrs, 3533 separator
hours, 2 wheel drive, level land,
with duals, chopper
\$24,500



JOHN DEERE 9500

2wd with chopper, 24.5x32 and
14.9x24 tires, 4258 eng
2870 sep hrs
\$22,000



CASE/IH 1680

2 wheel drive, 4533 hours,
30.5x32 and 18.4x16.1,
spreader
\$10,500



INTERNATIONAL 1480

4363hrs, 2 wheel drive, with dual
spreaders, 24.5x32 front, 18.4x16.1
rear, clean and straight
\$11,500



JOHN DEERE 6620

SIDEHILL, 5242 hours, chopper,
nice machine
\$12,500



CASE IH 1680

Firestone (90%) 30.5x32, 14.9x24,
2wd, rock trap, dual spreader,
Cummins
\$18,500



JOHN DEERE 9500

combine, 4x4, 4435 engine,
2985 separator, nice interior
\$28,500



CASE IH 1640

rock trap, chopper, 4158 hours,
Cummins power, 23.1x26 tires
\$18,500



JOHN DEERE 6620

4081 hrs, 2 speed cylinder,
2wd with chopper, 23.1x26
\$12,000



**NEW WESTFIELD
W130-51**

13"x51" pto drive,
hydraulic lift, special
\$12,500



**NEW WESTFIELD
WR100-31**

pto drive, hopper and flexible
down spout available
\$5,200



**NEW IN STOCK
KONGSKILDE 1000**

grain vac, optional fan guard system,
comp with hose and clean up heads, 1000
pto. **Call for special price!**



KONGSKILDE 1000

grain vac, factory fresh rebuilt fan,
newer air lock,
Fan Guard system, like new
\$18,500



**SUKUP 48" DUAL
SCREEN CLEANER**

#5 outer and #3 inner screens,
8" fill auger, tailings auger, single
phase, like new. **\$9,800**



**SUKUP 60" DUAL
SCREEN GRAIN CLEANER**

#4 outer screen, #2 inner screen,
3 phase motors, no fill auger, nice
\$8,200



NECO 51A

51" drum, 8" fill auger, tailings auger,
#4 outer screen, single phase
\$7,500



FETERL 85

8" auger, #6 screen
\$1,900



**SNOWCO 36" SINGLE
SCREEN GRAIN
CLEANER**

8" fill auger, corn and bean screen,
electric drive. **\$3,150**



**DMC HI CAP 40 GRAIN
CLEANER**

8" fill auger, #6 outer screen,
#2 inner
\$2,900

MANY NEW PACKER'S ONLINE - NEW & USED



Unverferth

BUSH HOG

DEMCO

REMLINGER

AGI WESTFIELD

KONGSKILDE
the solution to your business



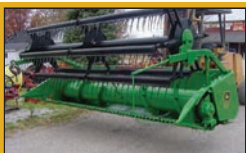
JOHN DEERE 915
15' flex head, hydraulic fore and aft, poly fingers and tear drop reel
\$6,800



JOHN DEERE 925
25' flex head, contour, nice steel snouts, good poly, nice
\$9,000



JOHN DEERE 213
flex head, poly tines and fingers, nice head ready to go
\$3,900



JOHN DEERE 913
rigid, straight, good knife
\$5,200



CASE/IH 1020
18' flex head, quick cut knife, poly skids, mechanical fore and aft, through shop
\$7,200



CASE/IH 1020
15' flex head, quick cut knife, missing some poly, nice header
\$7,800



CASE/IH 1020
20' flex head, electric, header height, poly skids, straight and nice head
\$CALLS



INTERNATIONAL 820
13' flex, nice straight head, good auger and floor
\$3,900



NEW CAPELLO QUASAR 830
chopping head, fender rolls, headsite, stalk stompers
CALL



GERINGHOFF NORTHSTAR ELITE XL
8x30 non chopping, headsight, hydraulic deck plates, crop sweeper corn reel, Case IH flagship hook up.
\$32,500



CASE IH 1083
8x30 dual pto shafts, straight tin, good rolls and plates
\$9,500



CASE/IH 1063
6x30 corn head, rolls like new, good tin
\$9,200



JOHN DEERE 693
poly, hydraulic deck plates, nice nice
\$10,500



1997 JOHN DEERE 494
38" spacing, level land, hydraulic deck plates, poly snouts
\$8,700



JOHN DEERE 643
6x30 low tin corn head, oil bath, ear savers, good rolls and plates nice
\$7,800



JOHN DEERE 843
low tin corn head, oil bath, good rolls and plates
\$5,500



JOHN DEERE 443
4x30 high tin, non oil bath, through shop
\$3,200



JOHN DEERE 444
4x36 low tin corn head, oil bath, taper rolls
\$3,500



INTERNATIONAL 983
8x30, good plates and rolls, tall shields
\$8,200



INTERNATIONAL 963
6x30 corn head, good rolls and plates, new paint, nice
\$7,500

WAY TOO MANY TO LIST!

Celebrating Over 50 Years!



BORN IMPLEMENT

12747 Vermilion Rd., Amherst, OH 44001
2 Miles North of Kipton OH

WWW.BORNIMPLEMENT.COM

phone: (440) 965 5675 | toll free: (844) 692-0299



KINZE 851

850 bushel single auger cart, roll tarp, 20" auger, 900/60R32 tires
CALL FOR PRICE!



KINZE 1050

cart on floaters, roll tarp and scales, hydraulic spout, ready to go, excellent
\$54,500



KINZE 31050

grain cart, big floaters, no tarp, no scales, nice straight cart
\$36,000



KINZE 1040

on tracks, scales, tarp, straight local cart
\$29,500



KINZE 840

grain cart, side boards, tarp, good tires and augers, nice
\$16,000



KINZE 640

grain cart w/ tarp, lights, Firestone 24.5x32
\$14,500



KINZE 640

dual auger grain cart, nice straight cart
\$12,500



KINZE 440

grain cart, dual augers, corner unload, 23.1x26 diamond tread tires, side extensions, ready to go
\$9,700



NEW KILLBROS 735

750 bushel single auger cart, 18" auger, hydraulic adjustable spout, tarp, 24.5x32 tires
CALL \$



KILLBROS 1200

700 bushel, tarp, augers replaced, 24.5x32 tires
\$12,000



PARKER 4500

side boards, nice auger, nice nice cart
\$9,300



A&L 456

grain cart, flow control, new augers, tarp, nice, many other carts to pick from
\$8,300



JOHN DEERE 500

grain cart, side extensions, side auger, flow control
\$6,950



A&L 425

400 bushel cart, hydraulic fold auger, lights, good augers, ready to go
\$6,200



A&L 425

bottom auger grain cart, augers like new, manual fold auger, side extensions, small 1000 pto
\$4,300



JOHN DEERE 1210A

grain cart, 400 bushel, tarp, new paint, used last fall
\$3,550



DMI BIG LITTLE 425

bushel, bottom dump, brakes, nice
\$3,800



KILLBROS 350

with 20" sides, 300 bushel, John Deere running gear, roll tarp
\$4,800



KILLBROS 375

with 20" extensions, 375 bushel, 12 ton gear 16.5x16 tires
\$3,800



UNVERFERTH MCCURDY 275

wagon on H&S 15 ton gear, minus belt conveyor, roll tarp, nice
\$3,900


ONLINE @ WWW.BORNIMPLEMENT.COM



Unverferth
  **BUSH HOG®**
 DEMCO
  **REMLINGER**
  **AGI WESTFIELD**
  **KONGSKILDE**
the solution is your success



JOHN DEERE 1560
 15' dolly wheel, flat fold JD markers, fill auger with brush screw, good blades and boots, nice nice
\$28,500



JOHN DEERE 450
 17 hole, 7 1/2" spacing, small seed box, nice little drill
\$7,500



CASE IH 5100
 21 hole, s-tines
\$5,900



BRILLION SSB12
 12' 2 box seeder, s-tine track remover, acre counter
CALL




TYE 15' DRILL
 7 1/2" spacing, front mounted s-tine cultivator
\$4,500



JOHN DEERE 7200
 6x30 no-till, liquid fertilizer with single disc openers, vacuum, row cleaners, real nice planter
\$12,500



JOHN DEERE 1250A
 4 bottom 3 point plow 16", good steel
\$1,750



JOHN DEERE 7000
 6x30 dry fert, double disc openers, cross auger, no-till coulters, insecticide, monitor
\$4,700



NEW GREAT PLAINS 1800TM
 18' Turbo Max, other sizes available
CALL



GREAT PLAINS 2400TM
 24' Turbo-max, rear hitch, new in stock
CALL



GREAT PLAINS 3000TM
 NEW 30' Turbo-Max, rear hitch new and in stock
CALL FOR SPECIAL PRICE



NEW GREAT PLAINS 1200TM
 12' Turbo Max in stock, other sizes available, call for prices and availability
CALL



KUHN KRAUSE EXCELERATOR 8005-25
 rear hitch, new and in stock, other sizes available
CALL



KUHN KRAUSE EXCELERATOR 8005-30
 new and in stock
CALL



KUHN KRAUSE EXCELERATOR 8005
 34', new in stock, other sizes available
CALL



BRILLION WM360
 30' cultimulcher, new shanks, tires and scrapers, though shop
\$25,500



BRILLION WL-3003
 25' flat fold cultimulcher, no scrapers
\$17,500



BRILLION WM3001
 25' new scrapers and tires, teeth like new, nice
\$15,500



CASE IH 496
 25' 19 1/2"-20" blades, 7 1/2" spacing, extra nice
\$10,500



KEWANEE
 12' cultimulcher, new tires, cylinder and hoses, rear scrapers, no welds, nice
\$5,800

MANY MORE PLANTERS AND CARTS

Celebrating Over 50 Years!

BORN IMPLEMENT

12747 Vermilion Rd., Amherst, OH 44001
2 Miles North of Kipton OH

WWW.BORNIMPLEMENT.COM

phone: (440) 965 5675 | toll free: (844) 692-0299



JOHN DEERE 7810
mfwd, 10 bolt axle duals, new tires,
power quad, 3 remotes, 540/1000, nice
\$59,500



CASE IH 8940
MFWD, 3 remotes, duals, 18.4x42 rear,
14.9x30 fronts like new, 7552 hours,
new paint and nice
\$49,900



JD 4960
new interior & seat, 42 inch rubber
w/ 10 bolt hubs & inner wheel wts,
14.9x30s w/ fenders, 3 pt w/ quick
hitch, big 1000, 3 hyd **\$46,500**



JOHN DEERE 4850
mfwd, pwr shift, 3 remotes, big 1000,
18.4x42 rears duals like new, 16.9x28
fronts, quick hitch, weights front and
rear, 5413 hrs, nice **\$41,500**



INTERNATIONAL 656
Hydro, gas, loader wiyh 40" bucket,
2 remotes, 540 pto 4500 hours
\$6,900



JOHN DEERE 5020
wheatland, cab, diff lock,
2 remotes, small 1000 pto,
24.5x32
\$15,500



JOHN DEERE 6030
cab, synco trans, big 1000 pto,
2 remotes, diff lock, 18.4x38,
528 hours
\$17,500



JOHN DEERE 4620
synchro, dual remotes, 1000 pto,
20.8x38, diff lock,
6198 hours
\$13,500



JOHN DEERE 4630
4630 4 post, Woods 255 loader
w/ 6' bucket, quad trans,
18.4x38
\$17,000



JOHN DEERE 4430
4 post, synco trans,
dual remotes,
18.4x38 tires
\$16,500



BELARUS 500
65 HP, runs good, sips fuel,
cheap pto power for the farm
\$4,500



**STEIGER PANTHER
III ST310** 165 hours on rebuilt
Cummins, 20 speed trans, 4 remotes,
7426 hours, like new 24.5x32 radials
\$25,500



SOLD

INTERNATIONAL 1466
2 remotes, 540/1000 pto,
18.4x38, good t/a
runs good
\$14,000



JOHN DEERE 2840
canopy, hi-lo, dual remotes,
dual pto, 18.4x34,
396 hours
\$13,800



JOHN DEERE 4520
synchro, side counsel, 1000 PTO,
2 remotes, 18.4x38,
showing 7452 hours
\$13,000



OLIVER 1850
diesel, narrow front, hydra power,
2 remotes, 18.4x34 firestones,
5126 hours
\$8,500



OLIVER 77
gas, narrow front, 2 remotes,
12.4x38, nice straight tractor
\$3,200



JOHN DEERE 4320
synchro, dual pto and remotes,
20.8x34, showing 8825 hours
\$23,500



NEW HOLLAND 5635
two wheel drive, cab, dual
remotes, 6845 hours, 18.4x30 tires,
runs great, clean
\$13,500



MASSEY-HARRIS 44
gas, single remote, 540 pto,
like new 15.5x38, new radiator,
fresh rebuilt engine
\$4,000

OVER 100 HEADS IN STOCK!



Unverferth



BUSH HOG

DEMCO

REMLINGER

AGI WESTFIELD

K KONGSKILDE
for whatever your business



NEW KINZE 3500
8x16, no-till, Furrow Cruisers,
in stock ready to go,
more planters coming in
CALL



KINZE 3500
8x15 no-till, box extensions,
KPM II monitor
\$44,000



KINZE 3600
16x30 liquid fertilizer, piston pump,
notched single disk openers with new
blades, no-till, KPM II monitor
\$48,500



KINZE 3600
16x31, no-till, all new
steel, box extensions,
through shop
\$58,000



KINZE 2600
12x23, new no-till coulters, updated
closing wheel arms, rubber closing
wheels, through shop ready to go
\$37,500



KINZE TWIN LINE 8
8x30 no-till, dry fertilizer, double disc
openers, completely rebuilt,
KPM II monitor
\$28,500



KINZE 2600
12x23, new no-till coulters,
KPM II monitor, through shop,
ready to go
\$41,000



KINZE 2500
8x15, no-till coulters,
rubber closing wheels, KM
3000 monitor
\$36,500



KINZE 3500
8x15 liquid fertilizer, notched single
disc openers, piston pump, 2-100 gal
tanks, insecticide, KPM III monitor
\$55,500



KINZE 3000
6x30 no-till, dry fert, notched single
disc openers, cross auger, row cleaners,
cast closing wheels and chains, nice
\$29,500



KINZE 2600
12x30 liquid fertilizer, piston
pump, 4-150 gal tanks,
Rawson till system
\$29,500



KINZE 3000
6x11, no-till coulters, rubber
closing wheels, KPM II monitor,
nice, ready to go
\$32,500



KINZE 3600 8x36 no-till planter,
liquid fertilizer, 2) 150 gal. tanks, notched
single disk openers w/gauge wheel,
piston pump, new no-till coulters, good
seed openers, keetons, **\$39,500**



KINZE 3600
8x15 wide row, 36x18", new no-till
coulters, good seed openers,
KPM II monitor
\$42,500



KINZE 3000
6x30 liquid, notched single disc
openers, 2-150 gallon tanks, new
squeeze pump, cast closing wheels
\$28,500



KINZE 2000
6x11 single frame, row
cleaners, box extensions
insecticide, nice
\$24,500



KINZE 2600
16x31, liquid tanks, 2 squeeze pumps,
tubes on back 16 rows, new steel,
many new parts, through shop,
KM 3000 monitor **\$42,500**



KINZE RF
rear fold planter,
23x15, no-till,
many new parts
\$8,500



KINZE 3000
6x11, no-till coulters, rubber
closing wheels, KPM II monitor,
nice, ready to go
\$29,500



KINZE
single frame 6x30,
row cleaners, insecticide,
no fertilizer
\$4,500

WAY TOO MANY DISCS TO LIST

Celebrating Over 50 Years!



BORN IMPLEMENT

12747 Vermilion Rd., Amherst, OH 44001
2 Miles North of Kipton OH

WWW.BORNIMPLEMENT.COM

phone: (440) 965 5675 | toll free: (844) 692-0299



SUNFLOWER 6333-25
3 bar spike and rolling bskt, all new 9" ultra wings and shank protectors, spring shanks, 19 1/2" blades, rear hitch, extra nice **\$42,500**



SUNFLOWER 1232-27
27" rock flex, 21" blades, 7 1/2" spacing, rear hitch, gauge wheels, nice **\$21,500**



KUHN KRAUSE DOMINATOR 4850-21
13 shank, combo shanks, all blades like new, nice **\$38,500**



KRAUSE 7400
24' disk, 9" spacing, rock-flex, walking tandems, 3 bar coil tine harrow, 23" blades, ready to work **\$27,500**



LANDOLL 2211-11
hydraulic blade lift adjustment, manual gang angle, 2" straight points, blades measure 22 1/2"-23 1/2" nice local machine **\$24,500**



GLENCOE 5 SHANK DISC CHISEL
4" twisted, 19" blades, nice little machine **\$6,200**



JOHN DEERE 712
13 shank disc chisel, 2" points, 5 bar spike harrow, new paint **\$11,500**



DMI ECOLO-CHAMP 1300
11 shank, 6 parabolic shanks and 5 chisel shanks, new steel, hydraulic gang adjust, excellent machine **\$14,500**



GEHL 125
hydraulic drive, scales, long unload auger, 2 screens, nice **\$11,500**



BEAR CAT 1250A
grinder mixer, hydraulic drive, scales, nice **\$8,500**



BEAR CAT 101
grinder/mixer, hydraulic drive, good augers and hammers **\$7,500**



INTERNATIONAL 12' DISC
rock-flex, 10" spacing, 22-23" blades, nice heavy disk **\$6,200**



DEGELMAN R570P
prong type rock picker, like new **\$7,900**



LEON ROCK PICKER
ground drive, hydraulic dump nice **\$7,500**



LEON A3000
ground drive rocker, nice shape **\$7,500**



POWERBOSS SW/75-HD
floor sweeper, propane, runs good **\$3,000**



NEW HURRICANE STORM
12" wheel, 8" wheel available, 540 pto **CALL FOR PRICE**



HURRICANE 24
36" wheel, 25" scraper blade, big 1000 pto **\$10,500**



NEW REMLINGER PD 400 18-20
adjustable wheel, low maintenance belt drive, 540 pto, ripper tooth available **CALL FOR SPECIAL PRICE**



NEW HOLLAND 145
slop pan, like new **\$8,700**

GREAT SELECTION OF TOYS AND APPAREL



Unverferth



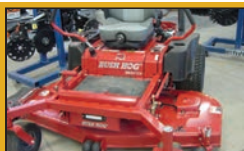
BUSH HOG®

DEMCO

REMLINGER

AGRI WESTFIELD

KONGSKILDE
the industry's year success



NEW BUSH HOG
Commercial grade 73" mower, 27 HP Kohler, suspension seat, other sizes and models available
CALL

NEW BUSH HOG HDE 25610
25 hp Kohler, 61" deck, suspension seat, other sizes and models available
CALL

NEW BUSH HOG
22 hp Kawasaki, 61" deck, suspension seat, many other sizes available
CALL

NEW BUSH HOG 2249
22 hp Kawasaki, 49" deck, suspension seat, other sizes and models available
CALL



HARDEE LR50160
ditch bank mower, 540 pto, demoed, like new
\$16,700

WOODS PSS72
6'2 box seeder, demo unit, same as new
\$7,700

WOODS PRD8400
7' rear discharge finish mower, nice
\$2,700

BUSH HOG 3710
10' single fold, walking tandems, laminated tires, 540 PTO, deck rings, clean and straight
\$12,500



SOLD
LAND PRIDE FDR2572
6' finish mower, 540 pto, new blades last year, extra belt
\$1,950

WOODS RM59
5'3 point finish mower, new blades, belts and bearings, through shop and ready to go
\$1,150

BUSH HOG BH4
4' cutter, 1" cutting capacity, 1 year limited and 3 year limited gear box warranty
\$1,150

NEW BUSH HOG BH217
7' rotary cutter, clutch and chains, 540 pto
CALL



NEW BUSH HOG RT60G
5' roto-tiller, 1 year limited and 5 year limited warranty on gear box
\$2,050

BUSH HOG HDTH5
5' rear discharge finish mower, 1 year limited and 5 year limited gear box warranty
\$2,550

BUSH HOG 3308
8', 3" cutting capacity, new blades, little use
\$5,200

BUSH HOG HDTH6
72" rear discharge finish mower, 1 year limited and 5 year limited gear box warranty
\$2,950



BUSH HOG HDE 2555
25hp, 51" deck, keyless start, 3 year warranty, 0% for 48 months (with approved credit)
CALL

BUSH HOG 1812
12' batwing, 540 pto, chains front and rear, aircraft tires
CALL

BUSH HOG 2215
15' batwing, 540 pto, deck rings, chains front and rear
CALL

BUSH HOG HDE 2549
25 hp, 49" deck, keyless start, 3 year warranty, 0% for 48 months (with approved credit)
CALL

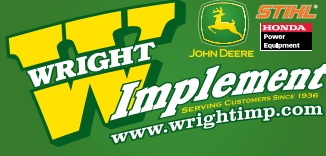
STIHL AND HOLLAND GRILL DEALER

Bowling Green, KY
 (270) 781-4747
 (877) 334-1711

Owensboro, KY
 (800) 252-3904
 (270) 683-3606

Corydon, IN
 (877) 453-7483
 (812) 738-2162

Seymour, IN
 (800) 654-4860
 (812) 522-1922



Glasgow, KY
 (270) 678-9200
 (855) 556-2430

Hardinsburg, KY
 (800) 755-0539
 (270) 756-5152

Orleans, IN
 (800) 643-3031
 (812) 865-3334

Sellersburg, IN
 (800) 643-3031
 (812) 246-6309

Shepherdsville, Ky
 (502) 251-1800



2019 JOHN DEERE 9470RX (New) #108857...\$438,900 (O)



2013 JOHN DEERE 9360R 18 speed powershift, 18 F/6 R, #110700.....\$159,900 (O)



2013 JOHN DEERE 9410R, 18 speed powershift, 18 F/6 R speeds, #109272.....\$169,500



2014 JOHN DEERE 9410R 18 Speed Powershift, 18 F/6 R Speeds with Efficiency Manager, 4118 hrs, #108603.....\$176,500 (S)



2013 JOHN DEERE 9410R, 18 sp pwr shft., #109273...\$172,500 (O)



2012 JOHN DEERE 9360R, articulated 4WD, pwr shift, #177986.....\$133,900 (S)



2016 JOHN DEERE 6120E, MFWD, 24F/12R PWR rev, #178241.....\$61,995 (SV)



2001 JD 9650 STS 3074/2056 Hrs. Corn/Bean/PRWD/Singles/Chopper/Yield Monitor/Cont Mstr (Lat Tilt Feederhouse) #106523..\$49,800 (H)



2012 JOHN DEERE S670, PRWD, 2355 hrs., #110388.....\$128,900 (BG)



2017 JOHN DEERE S680, 1420 hrs., #109350.....\$259,900 (E)



2018 JD R4045...120' Boom, ExactApply, Direct Inject System, BoomTrac Leveling, Stainless Tank, AMS-6000 Receiver #109185.....\$314,500 (S)



2014 John Deere R4030, 90' boom width, 15" nozzle spacing, Hours: 1083, #108979.....\$175,000 (O)



2013 JOHN DEERE 4830, 100' 15" spacing, stainless tank, #108360.....\$89,500 (O)



2017 CASE IH Patriot 4440, 730 hrs., 120' booms, boom leveling, stainless, guidance ready, #106174.....\$244,850 (O)



2014 ROGATOR RG700 2341 hrs. #108284.....\$85,900 (O)



1999 TERRAGATOR 8103, #107919.....\$35,500 (O)



2017 JOHN DEERE 5100E, MFWD, 655 hrs, #177791.....\$49,995 (C)



2019 JOHN DEERE 5090E, MFWD, PWR REV., #110524...\$54,995 (O)



2018 JD 6130M PowrQuad Plus - 24/24, 40 km/h 540/1000, #107857.....\$107,000 (S)



2013 KUBOTA M110, MFWD, Pwr Rev., 3500 hrs, #109306...\$39,495 (S)



2014 JD 6105M, 758 hrs., 4WD., #103243.....\$49,995 (BG)



2015 JOHN DEERE 5065E, 9F/3R SyncShuttle Transmission TSS, #107545.....\$17,995 (G)



2018 JOHN DEERE 5075E, 38 Hrs Syncro / MFWD / Rear PTO: 540 #94157.....\$27,495 (O)



2019 JD 8245R 16F/5R Speed Powershift Transmission, 230 hours #108869.....\$238,500 (O)



2018 JOHN DEERE 8400R, MFWD w/susp. #109299 \$309,800 (O)



2014 JOHN DEERE 8335RT, 3314 hrs. #109248.....\$157,900 (S)



2015 JOHN DEERE 1990 31 x 13.5 -15, #109309.....\$92,800 (S)



2013 JD 1770NT 16R, 30" Spacing, Vacuum, Row Command, Variable Rate Drive, Active PDF, Liquid Fertilizer with Single Disk Openers, #109734.....\$78,500 (SM)



2014 JOHN DEERE 1790 32/15 flexfold, vac, 2 50 Bu. tanks, #106331.....\$92,800 (OR)



1999 JOHN DEERE 1860, 30x7.5 Single shoot Drill, #111315.....\$32,500 (H)



2013 JOHN DEERE 1790, 31 x 15", vac., #106883\$88,500 (BG)



2003 JOHN DEERE 1790, 23x15 wing fold, vacuum, #110399.....\$52,500 (G)



1998 JOHN DEERE 1780, 6/11 Row, 30/15" Spacing, Vacuum, 3 Bu Boxes, #107291 ... \$16,900 (G)



2006 KINZE 3600 31 X 15", Flex fold, #110882\$43,500 (O)



2006 John Deere HX20, 20' Rotary Cutter, #176930 \$14,899 (E)



2017 WOODS BW180X rotary cutter, 15' wing fold, #109042..... \$12,489 (G)



2013 JOHN DEERE CX20, 20' rotary cutters - heavy-duty, #178306 \$13,900 (BG)



2014 JOHN DEERE S690, INVENTORY REDUCTION PRICING, #99866.....\$184,800 (S)



2016 SCHABEN ESF-6500, 60' boom, # 178200\$17,900 (BG)



2017 JOHN DEERE Z915E, 60", gas, 2WD, #106664.... \$5,489 (O)



2016 JOHN DEERE Z915B, 54", 2WD gas, 340 hrs., #178228..... \$5,295



2018 JOHN DEERE X590, 54" hydr gas 2WD, #178293\$5,995 (H)



2010 JOHN DEERE X720, 62" deck, gas, 2WD 636 Hrs, #177762\$5,995 (BG)



2018 JOHN DEERE 835M, #178265..... \$14,995 (C)



2016 JOHN DEERE XUV825i, #169474..... \$8,989 (E)



2013 CUB CADET VOLUNTEER, #178250.....\$5,750 (H)



2012 JOHN DEERE 625i, 4WD XUV Gas, #178276 . . . \$7995 (H)



2018 JOHN DEERE 835M, 4WD XUV Gas, #177984....\$17,995 (B)

Bowling Green, KY
(270) 781-4747
(877) 334-1711

Owensboro, KY
(800) 252-3904
(270) 683-3606

Corydon, IN
(877) 453-7483
(812) 738-2162

Seymour, IN
(800) 654-4860
(812) 522-1922



Glasgow, KY (270) 678-9200
Hardinsburg, KY (800) 755-0539
(855) 556-2430 (270) 756-5152
Orleans, IN (800) 643-3031
Sellersburg, IN (812) 865-3334 (812) 246-6309
Shepherdsville, KY (502) 251-1800



CFAES

measure WHAT MATTERS

Farm Science Review goes virtual with the same great resources to help make quantifiable progress toward your goals, no matter how you measure your success.

What really matters to you?

Farm Science Review 2020 **ONLINE**

If your business is agriculture, our business is you.

SEPT. 22-24

Visit fsr.osu.edu
to access the free
digital event


**THE OHIO STATE
UNIVERSITY**
COLLEGE OF FOOD, AGRICULTURAL,
AND ENVIRONMENTAL SCIENCES

150 1870
2020

fsr.osu.edu



COWHERD

Equipment & Rental, Inc.

1483 Old Summersville Rd.
Campbellsville, KY 42718
Tony 270-469-0398
Vince 270-469-5095
Dairy Supply 270-465-2679

FREE DEMOS



DION F64
90" Head Fits: John Deere, New Holland, Gehl, Dion, Heston



ROTO MIX 414-14B
\$ CALL



PENTA 4030
Also 3030, 4030, 4430, 5030, 5930 IN STOCK!



DION B58 XLT
Rear unload
\$ CALL



PENTA 5020
\$ CALL



HAGEDORN 5440
New. Demo available.
\$ CALL



USED ANDERSON SMSP5E
Bale chopper and blower



KIRBY MFG INC 6x12 Can be used for feed or sawdust!
\$ CALL



ANDERSON
Bale wrapper
SEVERAL IN STOCK



CLOVERDALE 420T
Feed mixer
\$ CALL



MEYERS M350
Spreader
\$ CALL



2019 ROTO GRIND 760
Lower HP req. and smoother operations. 10-20 tons per hour



ANDERSON A380
TMR mixer
\$ CALL



PENTA 6730
Tandem, stainless steel liner, 3/4 augers



JAYLOR 1350
New knives. Right hand flip up conveyor, J bunks
\$9500



ROTO MIX 414-14B.
Newer discharge with a stagor rotar. In good shape. Used F41.
FRESH OFF THE FARM



ARTSWAY 6530
Demo
\$ CALL



2020 KEMCO 355
Bale wrapper (New)
\$ CALL



DION SCORPION 300
Pull-Type Forage Harvesters
\$ CALL



NEW HOLLAND 816
Forage Wagons
\$ CALL



PENTA 500
tillage tool
\$ CALL



MEYERS VB280
\$ CALL



TRIOLIET SOLOMIX
2-1200L
\$8,500



ECONO-WRAP EW-450S
Bale Wrappers
\$3,950



www.cowherdequipment.net



REITZEL
AG EQUIPMENT



Edon, OH • (419) 664-7017
reitzelagequipment@gmail.com
www.reitzelagequipment.com

Edon, OH
(419) 633-2950 Kenny
(419)-272-2680 Shop



2017 LAND PRIDE RC2515 540 RPM rotary cutter New!! Never Been Used! Super sharp condition **\$13,950**



11 DEERE 310SJ 4,700 hrs., his is an awe-some unit!! AC,EXT hoe, 4in1, 4wd, pwr shift, Aux Hyds. Forks,ride cntl **\$54,900**



JD 9770 STS 4WD Drive, 2,200 sep. eluxe cab, Auto temp. control, Power mir-rors, 3 speed Hydro, 90% Rubber **\$89,500**



JD 7830 Only1,280 hrs., 205 hp,IVT transmission,Deluxe cab with Active seat,RT,LH HID Lights! **\$115,900**



10 CAT 312D 4,502 hrs., 97 hp, Cab Aux Hydraulics, Quick coupler, Good UC 28" pads **\$81,500**



2017 KUBOTA M7-151 PREMIUM KVT only 700 hrs.,540/1000 pto Premium cab with suspension **\$89,500**

NATIONWIDE DELIVERY AVAILABLE!
ALWAYS BUYING PREMIUM EQUIPMENT!!!
HAVE EQUIPMENT TO SELL AND NEED CASH FAST?
GIVE US A CALL - WE CAN HELP!
FARM CREDIT EXPRESS & AG DIRECT FINANCING AVAILABLE!



MACK CL700 Camel Back, Full DF, wet kit, T2090 Maxitorque 9 speed transmission,New Rubber!! **\$42,500**



2005 JOHN DEERE 5303 835 hrs., 64 hp, Beautiful! Fender mounted radio, Chrome Exhaust, suspension **\$19,950**



2012 BUSH HOG 2615L Really nice 15ft rotary cutter small 1000 pto front and rear safety chains **\$11,950**



14 DEERE 50G 122 hrs., Sweet unit Hyd Angle blade and long arm,hyd thumb, full cab like new !! **\$59,900**



CASE IH 485 ONLY 519 hrs., 53 hp, Super Clean tractor, 1 rear remote, Ready to go to work!! **\$14,750**



1998 JOHN DEERE 1008 3 pt mount 10 ft rotary cutter 540 pto, quick hitch ready, good straight cutter **\$3,750**



13 JOHN DEERE 608C Field ready 8 row 30 in, Hyd deck plates, contour shafts good chains and rolls **\$37,500**



JDS660 1,391/809 Hrs., power fold bin extension, PF unloading auger, deluxe lights, 2630 !!! **\$132,500**



15 JOHN DEERE 6175R 475 hrs., 175 hp, MFWD Drive, 3 rear remotes 4100 Display power quad **\$115,900**



Reiselt's

MACHINE WORKS

Custom Truck Upfitting



Erich Reiselt



740-272-6809 • ermachineworks@gmail.com

4113 Mooney Road • Radnor, Ohio 43066 ☘

On Facebook @ truckbedman



Find us on



@truckbedman

4113 Mooney Rd., Radnor, OH 43066

740-272-6809

BRYANT COMBINE



NEW, USED & REBUILT PARTS



USED ENGINES



FEEDERHOUSE CHAINS



SUMP HOUSINGS



WOBBLE BOXES



HEADER LIFT CYLINDERS



AUGERS & TUBES



TAILBOARD ASSEMBLIES

BRYANT

COMBINE PARTS LLC



U.S. 27 • Bryant, IN • 260-997-6940 • 800-255-1071
parts@bryantcombineparts.com • Shop Online At bryantcombineparts.com

HAS YOU COVERED!



See our Videos at
www.bryantcombineparts.com

Reel Repair Kits for Pipe Reels

If your reel pipes are worn where the plastic bearing rides, our reel repair kits will provide a quick inexpensive fix! No more having to buy those expensive reel pipes! Our kits fit almost any pipe reel!

Visit bryantcombineparts.com for more information and watch our instructional videos today, or give us a call! Prices range from \$28-\$30 per kit. Dealer inquiries welcome.



BN-KitNPS No Pin Style



BN-KitRP Roll Pin or Plastic Washer Style



BN-KitHXH Hex Hole Style

RECENT SALVAGE ARRIVALS!



JD 9560 STS



MF 883



Gleaner R72



JD 9510



Case IH 7230

Family Owned & Operated Since 1987



HARLEMAN MANUFACTURING



Your #1 Stop for Utility Line & Skid Steer Equipment!

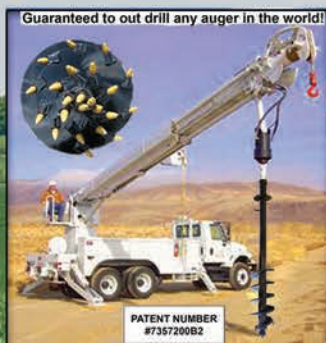
- Augers & Auger Drives
- Backhoes
- Root Grapples
- Tree Pullers and Saws
- Heavy Duty Brush Cutters
- Pallet Forks
- Vibratory Drills



Rancher Series Tree Saw

NEW

- 36" Blade
- Cuts trees below ground level



\$8500

(417) 876-3011

117 South St. James Street
El Dorado Springs, MO 64744

www.harlemanglobal.com

Watch our equipment videos at www.youtube.com/harlemanmfg

KINZE**HORSCH****J&M****rain****Sorensen**
Equipment Company**KINZE****SALES • SERVICE • PARTS**

Our sales team wants to fit our customers with the best equipment for their farming operations. If we don't have the equipment you're looking for, we will try to locate it for you. We also offer several different financing options.

We want to meet or exceed the needs of our customers from start to finish and customer satisfaction is a top priority of ours.

Contact us today and see if we can help you out.

PLANTERS

Kinze 4900, Bulk, 24-30
 Kinze 3800, Bulk, 24-30
 Kinze 3660, Bulk, 16-30-31
 Kinze 3660, 16-30-31
 Kinze 3660, Bulk, 12-30-23
 Kinze 3650, Bulk, 16-30-31
 Kinze 3600, Bulk, 16-30-31
 Kinze 3600, 16-30-31
 Kinze 3600, 16-30
 Kinze 3600, Bulk, 12-30-23
 Kinze 3600, 12-30-23
 Kinze 3600, 12 wide
 Kinze 3500, 8-30-15
 Kinze 3200, 12-30
 Kinze 2600, 12-30-23
 Kinze 2500, 8-30-15

**EQUIPMENT**

Horsch Joker, 30'
 Horsch Joker, 37'
 CIH 330 Turbo Till, 26'
 JD 2623, 30'
 Kinze 1500, Tracks
 Kinze 1300, Tracks
 Kinze 1300, Floaters

Kinze 1200
 Kinze 1100, Tracks
 Kinze 1100, Floaters
 Kinze 1050, Tracks
 Kinze 1050, Sof-Tred
 Kinze 1050, Row Crop
 Kinze 1040, Row Crop

Kinze 1040, Tracks
 Kinze 840 & 850, Scales
 Kinze 640
 J&M 1151, Tracks
 Brent 778, Scales



2104 23rd Street | Harlan, IA 51537 | (712) 755-2455
www.sorensenequipment.com

MORE UPTIME

FOR 10% LESS*



NEW Rollers: less friction, less vibration and less power requirements.

EASY CUT II

by SCHUMACHER.

Cutterbar Kits

LESS MAINTENANCE!

The EasyCut II system eliminates the need for any adjustments, meaning less maintenance, less downtime and provides high-cutting performance in the toughest conditions.

*10% MANUFACTURER REBATE

- 1) Purchase a SCH Easy Cut II Cutterbar Kit from July 10, 2020 through September 30, 2020 from S.I. Distributing.
- 2) Receive the receipt and a simple rebate form from S.I. Distributing.
- 3) Mail, email or fax a copy of the receipt along with the completed form to the manufacturer, SCH/Group Schumacher.
- 4) Receive a check from SCH for 10% of the purchase price! NOTE: This is a money-back offer. It is not a store credit or parts credit.



Offer valid from 7/10/2020 through 9/30/2020. All receipt(s) must be dated within the valid time frame. Rebates must be mailed and postmarked no later than 10/31/2020 to qualify. The rebate amount will reflect 10% of the purchase price on SCH Easy Cut II kit(s) only. Rebate amount does not include shipping charges or taxes if applicable. Schumacher has the right to end this program at any time.

Toll-Free: **866-964-6158**

www.sidist.com



Spencerville, Ohio *Successful Innovations for Agriculture Since 1979*



RESTORE YOUR SOIL

FOR GREATER YIELD AND PROFITABILITY

We can help revive your soil biology with our collection of environmentally friendly microbial inoculants, seed treatments, and liquid fertilizers.

SHOP
ONLINE

www.genesis.ag/shop

Genesis AG



WHOLESALE TRAILERS

DELTA CATTLEMAN



BEST!

20' - \$10,600 | 24' - \$11,300
32' - \$14,000

CIRCLE W



16' - \$4500

CIRCLE W



20' - \$9800 | 24' - \$10,800

DURALITE (NO WELDS)



7 year warranty
20' - \$16,000 | 25' - \$18,000

W.T. GOOSENECKS



16' - \$7100

20' - \$7900

24' - \$8900

DELTA-500



16' - \$6300

20' - \$8200

DELTA



12' - \$4800 | 14' - \$4900 | 16' - \$5000

DELTA FLATBEDS



25' 14k - \$5900
25' 14k Pop updrive - \$6100
25' 20k - \$8600

25' 20K Mega Ramps - \$9100
28' 20K - \$9000
30' 20K - \$9200

CORN PRO



16' - \$5900

TRAILERS



Storage and Road Dry Van Trailers
- \$1500 and up

MANY MORE SIZES AND OPTIONS AVAILABLE!

615-714-3894

1015 MCCREARY RD., LEBANON TN



CHESLEY - 519-363-3192 | LUCKNOW - 519-529-7995
 MOUNT FOREST - 519-323-2755 | WALTON - 519-887-6365
 www.robertsfarm.com



USED EQUIPMENT



STK# US60706

NH FR500 - 2013/
4WD/ 780 HRS
\$325,000



STK# US60264

NH FR9050
4WD/ 1300 HRS
\$295,000



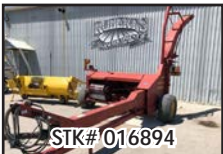
STK# US1019

NH FR500 - 2015/
4WD/ 1314 CHOP
HRS \$315,000



STK# 016717

NH FP230 - 2008/
CROP PRO
\$26,900



STK# 016894

NH FP230 - 2000/
CROP PRO
\$19,900



PRICE REDUCED

STK# US58013

NH CR960 - 2006/
CORN & BEAN
\$69,900



PRICE REDUCED

STK# 014635

NH CR960 - 2800
CHOPPING HRS/ 2WD
\$69,900



STK# 018614

NH T7.260 - 2012/
6481 HRS/ 4 REMOTES
\$85,000



STK# 015503

NH T8.300 - 2365 HRS/
50 KPH/ 19 SPEED
\$169,000



STK# US59545

NH T6.175 - 2016/
1915 HRS/ 3 ELEC
REMOTES \$86,950



STK# US60623

NH T8.275 - 2013/
1345 HRS/ 4 REMOTES
\$159,000



STK# 018175

CASE IH MX210 -
2003/ 2994 HRS/ 4
REMOTES \$89,900



STK# 018053

NH T6.175 - 458 HRS/
845 NSL LDR
\$113,950



STK# US60685

NH L220 - 2012/ 1078
HRS/ HAND CON-
TROLS \$28,900



STK# US60749

NH L220 - 2012/ 941
HRS/ ROPS
\$28,900



STK# 013460

NH C232 - 2015/ 667
HRS/ PILOT CON-
TROLS \$59,900

0% FINANCING AND CASH BACK OFFERS!
 Now through September 30, 2020



*For commercial use only. Customer participation subject to credit qualification and approval by CNH Industrial Capital Canada Ltd. See your New Holland dealer for details and eligibility requirements. CNH Industrial Capital Canada Ltd. standard terms and conditions will apply. Down payment may be required. Not all customers or applicants may qualify. Offer good until September 30, 2020, at participating New Holland dealers in Canada. Taxes, freight, set-up, delivery, additional options or attachments not included in suggested retail price. Offer subject to change or cancellation without notice. © 2020 CNH Industrial America LLC. All rights reserved. CNH Industrial Capital and New Holland are trademarks registered in the United States and many other countries, owned by or licensed to CNH Industrial N.V., its subsidiaries or affiliates.

Legendary Customer Service - It's In Our DNA

Follow us



@robertsfarmeq

JBC METALS

Metal Roofing Made Affordable!

502-845-1304

METAL ROOFING & SIDING

Eminence, Kentucky
Jason@JBCmetals.com

METAL SPECIAL • #1 40 YEAR METAL • CALL US FOR PRICING

BARN PACKAGES AVAILABLE!



NEW complete pole barn packages available! Give us your sizes and needs.

We have upgraded our entire facility to give you the highest quality and expert craftsmanship in roofing & siding.

- We're the factory!
- 26 colors
- Insulation
- Standing Seam
- Guttering
- Cut to the inch
- Soffit Panels
- Cannonball Doors
- Corrugated
- Walk-ins Welcome
- **MULTI COLOR**

5V & 1¼ corrugated starting at \$1.45 Ln./Ft. - Now available in white.



COME CHECK OUT OUR NEWEST FABRICATION FACILITY!

We have the necessary precision machines to cut and create what you need!

JBC Metals was started in 2003 by a family with many years experience in the steel and construction businesses. Being a smaller family company we are able to meet customers needs promptly and very accurately. And since **WE ARE THE MANUFACTURERS**, we are able to sell our products at wholesale prices unlike retail stores and lumberyards.



2007 Isuzu NPR, 180K Mi., Auto Trans., A/C, Alum. Jerr Dan, 17' Rollback w/Winch Slide Cyl. In Bed (New), All New Injections, Turbo \$15,000

SAME DAY SERVICE! WALK-INS WELCOMED!



Check out our full lineup of ASV Equipment!

ASV Posi-Track and skid-steer loaders are designed to help you work in more places and in more conditions so you can get more done every day. They are respected for their power, performance and serviceability. Each ASV machine gives you:

- **Best in class traction, performance, and speed.**
 - Industry-leading ground clearance.
- **Unparalleled performance in any condition.**
 - World-class operator stations.
- **Industry-leading serviceability for the highest productivity.**



All ASV machines are available with a full line of performance-matched attachments so you can handle a wide range of jobs, whether you work in construction, agriculture, land management, forestry or landscaping.

Authorized dealer for:



DIXIE DIESEL

www.dixiediesel.com

REPAIR & PERFORMANCE SPECIALISTS
 • Ford Power Stroke • Dodge Cummins • GM Duramax
(800) 523-4621 • (931) 381-1647
 200 E. 16th Street • Columbia, Tennessee 38401



MADE IN CANADA

www.spreadrite.ca

Spread Shavings Efficiently.

- ✓ Reduces wood shavings cost
- ✓ Quick and easy to attach to your Steiner or Ventrac Tractor



⌚ Bed Your Barns Faster.
 Significantly decrease the bedding times in your poultry barns. Turn your flocks around faster.

\$ Cut Bedding Expenses.
 Cut up to fifty percent the labor and bedding costs compared to other conventional methods.

✓ **Treat Your Birds Better.**
 Maintain a consistent floor temperature for new arrivals of young poultry birds.

Imagine sitting down on the job and getting a nice even layer of shavings on your poultry barn floor while reducing your time by up to 50%!

Nu-Matic SYSTEMS
519-669-5064
 ELMIRA, ONTARIO CANADA
 OVER 35 YEARS OF SERVICE
www.numatic.ca

Farm LIQUIDATION Sale



John Deere 9660 Combine with John Deere 630 Grain Platform with cart
PLUS
 John Deere 643 6 Row Corn head with cart
ALL FOR JUST \$89,000
(Can sell individually)

419-834-4012 | GREG SHARROCK



RICER EQUIPMENT, INC.

"Taking The Work Out Of Taking Care Of Business"

49 Good Manor Road, Lucasville, OH
740-289-4318

486 Burlington Road, Jackson, OH
740-288-4318

651 Phillips Run Road, Summersville, WV
304-872-1100

GET CONNECTED!



2019 KUBOTA M7-171-KVT TRACTOR
#9832
SPECIAL DEAL! SAVE \$50K!



LAND PRIDE RC3620
540 PTO, #4920
\$10,900



2004 KUBOTA B21
Tractor-loader-backhoe #10292
\$16,900



1999 KUBOTA M5400
Tractor #8535
\$10,900



2014 KUBOTA DM2028
Disc mower, #9418
\$8,500



2013 KUBOTA M126X
Power crawler tractor, 1808 Hrs.,
#4919 **\$39,900**



2016 JOHN DEERE Z930M
#8928
\$6,995



2005 JOHN DEERE 650J
Dozer, #8770
\$69,500



2014 KUBOTA RTV X-1120D
Utility vehicle, #U1686
\$8,500



2018 KUBOTA Z781
Zero turn mower, #7875
\$8,500



2010 BUSH HOG TD-1100
Batwing cutter, #10347
\$7,900



2018 KUBOTA B26
Tractor loader backhoe,
307 Hrs., #6225 **\$29,900**



2008 KUBOTA BX1850
Compact tractor, #8900
\$6,800



2017 KUBOTA KX033-4
Excavator, 27 Hrs, #4145 (L)
\$49,900



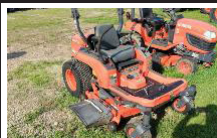
2011 KUBOTA RTV-1140
Utility vehicle, 3219 Hrs,
#9757 (L) **\$10,500**



2015 KUBOTA M6-131DTC-F
UTILITY TRACTOR
Demo unit with 608 hours, #1402
SAVE \$15K!



2016 KUBOTA MX5200F
Utility tractor #9258 (L)
\$16,500



2010 KUBOTA ZG222-48
Zero-turn mower, #7408
\$3,000



THE ONLY REAL CHOICE
www.ricerequipment.com

AG EXPRESS[®]

ELECTRONICS

100% EMPLOYEE OWNED

NORAC[®] BOOM HEIGHT CONTROLS



Gain control over difficult terrain with NORAC[®] Boom Height Control replacement parts & sensors.

DIGI-STAR[®] PRECISION TOOLS

We have Digi-Star[®] scale kits available! Digi-Star indicators offer accurate & dependable weighing information no matter what the job demands.

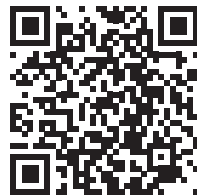


DICKEY-JOHN[®] MOISTURE TESTERS



The GAC 2500-AGRI & MINI GAC 2500 are the affordable options for moisture testers that provide accurate, elevator-like results consistently!

SCAN ME!



AGEXPRESS.COM

NE 308.381.2905 | IA 515.289.2746 | IN 765.533.4809

**Tough times
ask for a new
dimension of
comfort.**



Kubota



M7002: The new efficiency class

The Kubota M7002 sets new standards in performance, comfort and reliability in the professional segment.

www.kubota-eu.com



For Earth, For Life
Кубота

Evolution Ag
OPE 375 Malabar Dr Upper Sandusky, OH 43351
www.Evolutionagllc.com | 419-209-3876

Evolution Ag
21224 US Rt 23 N Cirdeville, OH 43113
www.Evolutionagllc.com | 740-474-2181

Evolution Ag
5565 St Rt 37 E Delaware, OH 43015
www.Evolutionagllc.com | 740-513-4842

Green and Sons
18987 St. Rt. 347 Raymond, OH 43067
www.Greenandsons.com | 937-553-3999

Green and Sons
12350 St. Rt. 56 SE Mt. Sterling, OH 43143
www.Greenandsons.com | 740-852-2205

Bane-Welker Equipment
3025 Progress Way Wilmington, OH 45177
www.Bane-welker.com | 937-382-0941

Bane-Welker Equipment
9762 U.S. 68 Georgetown, OH 45121
www.Bane-welker.com | 937-378-4880

Bane-Welker Equipment
1980 US Route 35 East Eaton, OH 45320
www.Bane-welker.com | 937-456-6281



KOEHLER
IMPLEMENT



GO THE EXTRA YARD



**2008 Kubota
ZD321**
21HP diesel engine,
950 Hrs., 54" deck.
\$5950



E-Z TRAIL 860 BU
Grain Cart
New 30.5X32 tires-roll
over tarp & light.
\$21,750



2017 Kubota BX 2370
w/LA243 loader, RCK60D
drive over mower deck,
pto & hydrostatic drive.
Ser #35172 **\$14,900**



2012 Bad Boy Outlaw
w/30hp Kohler
command
& 61" deck.
\$4750



**2009 Exmark
LZA26LKA60**
w/ 26hp liquid cooled
Kawasaki & 60" deck.
\$4900



FERRIS IS3200
Midnight Special Demo,
37HP EFI engine with the
oil guard system-61"
deck-gas **\$13,400**



Dixie Chopper
w/27hp Generac
& 60" deck
\$2900



2000 Dodge Ram
w/24 valve Cummins,
5 speed manual tran, 10'4"
steel bed w/sides & hyd tail
gate. No body rust! **\$8900**



NEW HOLLAND 974
Corn Head,
12 row on 20".
\$4900



Deutz 4.70
Good 18.4x38 tires &
a 4 post rops. Needs
brake fluid reservoir
\$7400



5.9 Cummins Diesel
160hp B5.9+44657221++
Mfg date 8/29/91.
5 speed getrag trans.
\$2900



**NEW HOLLAND 973
GRAIN HEAD**
25FT head with a crary
air reel w/ blower.
\$4900



E-Z TRAIL
500 BU. Gravity Box,
1585 gear-16.5X16.1 tires
& telescoping hitch.
\$3900



**2008 Cub Cadet
M60KWLC**
commercial w/29 hp
Kawasaki DFI liquid
cooled & 60" deck. **\$2900**



Marlist No Till Drill
on coultter caddy -
has grass seeder &
spring tine harrow.
\$1900



1969 Dodge D800
361 engine, tandem axles,
good steel bed w/hyd
lift, air brakes & 15 speed
trans. Solid truck. **\$4900**



**Killbros 400 BU
Gravity Box**
Killbros gear /W 20" tires
& a telescoping hitch.
\$2900



**2004 ExMark
Lazor Z**
w/20hp Kohler
Command & 48" deck.
\$1800



1992 Deutz Allis 9190
FWA-CAH-18 Speed
Transmission-20.8X38
\$ 29,000



**2009 Mercury Grand
Marquis w/4.6 engine,**
new tires, new water
pump 4 months ago.
\$4400

5 S Douglas St, Carthage, IL 62321 **FERRIS®**
Call (217) 357-3148 | www.koehlerimplement.com

Family owned and delivering high-quality customer service since 1940!



Duralume

www.duralume.ca

SAVE YOUR **BACK**
BUY ALUMINUM

ALUMINUM GATES

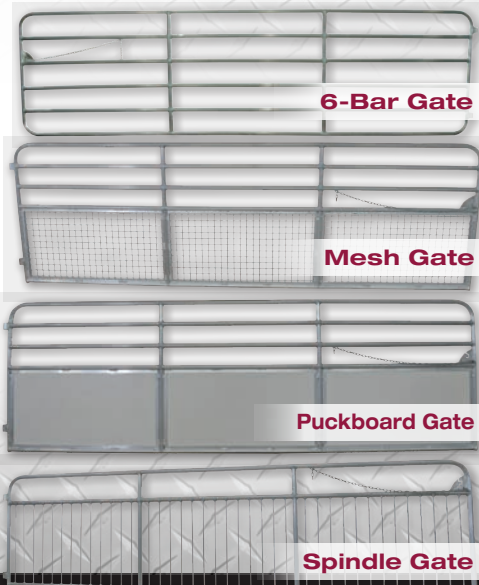
- ✓ Diamond Bar Technology
- ✓ Lightweight
- ✓ Heavy Duty 1 1/4" x 1 1/4" x .125 wall Aluminum Tubing

Duralume Technology offers you stronger, lighter and longer-lasting gates and corrals. Year after year, Duralume products will ensure ease of use, while their aesthetically pleasing design will add a finishing touch to your pasture entrance.

- ✓ Durable, Long Lasting
- ✓ High Tensile Grade Aluminum
- ✓ Light But Strong



NEW
Bolt on
top hinge



6-Bar Gate

Mesh Gate

Puckboard Gate

Spindle Gate

Call Us

1-877-698-0201

or your nearest dealer for more information.

www.duralume.ca

Mfg. by ESB Aluminum Products Inc.

Cashmans
Delaware OH • 740-363-6073

Mt Hope Elevator
Mt Hope OH • 330-674-5167

Post Farm Equipment
Fort Recovery OH • 419-733-0921

Sam Eicher
Grabill IN • 260-416-7951

Amos Beechy
Shipshewana IN • 260-768-3250

Twin Clover Equipment
Newark NY • 315-545-2027

Floyd Albrecht
Clare MI • 989-935-9386

Crist Byler
Cass City MI • 989-872-5467

Lost Creek Ag
Oakland Mills, PA • 717-463-3060

Sunny Ridge Supply
Dayton, VA • 540-879-3944

J & J Repair
Goshen, IN • 574-831-3075

Lerch's Barnlot
Hillsboro OH • 937-393-1016

SUBSCRIBE NOW!

U.S. FARMER IS NOW FREE!

U.S. Farmer

A Farms.com Company

COMPLETE THIS FORM & MAIL TO:

**195 Raymond Hill Road, Suite D
Newnan, GA 30265**

www.usfarmer.com



Sign me up for the weekly Machinery Newsletter (distributed via email) which features the latest news articles on farm equipment, maintenance, tips and more!

NAME:

COMPANY:

ADDRESS:

CITY:

STATE:

ZIP:

PHONE:

EMAIL (OPTIONAL):

ACRES FARMED OR RANCHED:

Get your **FREE SUBSCRIPTION**



888-531-1511



800-471-0799



**subscriptions
@usfarmer.com**



CLASSIFIEDS

DEADLINE FOR OCTOBER IS
SEPTEMBER 21, 2020
4:00PM

FARMERS!
POST YOUR
FREE AD
IN THE NEXT ISSUE OF USF!

CLASSIFIED ADS ALSO APPEAR ONLINE
ON FARMS.COM/CLASSIFIEDS.
*UP TO 140 CHARACTERS

PHONE
1-888-531-1511 x803
ONE FREE FARMER AD PER CUSTOMER PER MONTH.
BUSINESSES ARE NOT ELIGIBLE FOR THIS OFFER.

ANTIQUES

ANTIQUES 1000

INT 300, wide front, new rear tires, \$2200. Camden, OH. 513-594-5241.

1956 MH FERGUSON UTILITY TRACTOR, gas, swinging draw bar, live PTO, hyd, 3pth, good rubber, \$2500. Louisville, OH. 937-962-2364.

1938 INT I-12 TRACTOR, very good cond, runs good, older restoration, always housed. Norwalk, OH. 419-681-4394.

GRAIN HANDLING / STORAGE

OTHER 5490



2012 RICHIGER R90 GRAIN BAGGER can process up to 13000BU/hr, always shedded, exc cond, \$17000 USD. Southwestern Ontario, Canada. 519-533-2405.

HARVESTING

COMBINES 6010

1984 CASE IH 1460 COMBINE, new feeder house rebuilt, new belts & hoses, new front tires, lots of updates (to many to list), \$8500. Also 1020 7 1/2' grain head, rebuilt wobble box, \$3000. \$11000 for both. Gallipolis, OH. 740-256-6011.

MF 750 COMBINE, diesel, hydro & chopper, 15' grain head, good reel, 1163 corn head, 6 row, good running machine, \$5600 for all. Ottawa, OH. 419-532-3637.

IH 1440 COMBINE, 5594hrs, mud hog, 4WD, Redekop chopper, 24.5/32R, 12 ply tires, 820 header, SCH knife, good cond, \$7000. Marysville, OH. 937-309-5525.

JD 6620 TURBO COMBINE, 3388hrs, 30", 4R corn head, w/ new chains (2018), new chopper (2016), starts and runs well, \$7000. Springfield, OH. 937-323-8870.

JD 6600 COMBINE, great machine, no longer farming, \$5000. 643 corn head & 216 grain head available. Richwood, OH. 740-494-2790.

GRAVITY WAGONS 6050

KILLBROS HOPPER WAGON, 400bu, center dump, J & M gears, truck tires, lights, trails good, good cond, \$3100. Lewisburg, OH. 937-962-2364.

HAY & FORAGE

BALE WAGONS / RETRIEVERS 6310

NH 1038 BALE WAGON, pull type, 104 bale capacity, cab controls, will stack or single bale unload, good shape, \$9000. Seamen, OH. 937-764-1356.

VINTAGE HAY WAGON, good wood, 16' long, 7' wide. Jefferson City, TN. 865-397-9508.

LAWN & GARDEN

RIDING LAWN MOWERS 6420

JD RIDING LAWN MOWER, very nice, well cared for, paint good, 48" cut, hydrostatic trans, power steering, included is a gigantic grass catcher, this machine will not disappoint. Tullahoma, TN. 615-849-5012.

PLANTING & SEEDING

DRILLS & CADDIES 6820

JD 1560 GRAIN DRILL, 15', new blades, good boots, good paint & tarp, \$18000. Mount Vernon, OH. 740-398-6935.

PLANTERS 6830

JD 7000 630 PLANTER, 6R, 30", liquid fert, no-till coulters, cast iron closing wheels, \$6500. Richwood, OH. 740-494-2790.

TILLAGE

DISCS 7010

KRAUSE DISC, 13', working order, when calling ask for Tom. Please no calls after 9pm CST. Dyer, IN. 219-323-0099.

JD DISC HARROW, for sale, asking \$650. LaPorte, IN. 219-448-0398.

FIELD CULTIVATORS 7020

HINNIKER FIELD CULTIVATOR, 18', hyd wings, single bar harrow, \$1500. Richwood, OH. 740-494-2790.

MULCH FINISHERS 7030

HARROW GATOR, 14', good working order, when calling please ask for Tom. No calls after 9pm CST. Dyer, IN. 219-323-0099.

KEWANEE CULTI MULCHER, w/ leveling bar & cylinder, 12', good working order, tires good, when calling ask for Tom. Please no calls after 9pm CST. Dyer, IN. 219-323-0099.

ROTARY HOES 7050

JD 400 ROTARY HOE, 15', 3pth, \$900. Saint Henry, OH. 419-733-0460.

OTHER 7090

BRILLION CROWFOOT PACKER, 15'. Norwalk, OH. 419-681-4394.

TRACTORS

4WD 8100

NH T1510 TRACTOR, 4WD, 30hp, diesel, exc cond, HD bucket, loader, needs nothing, works flawlessly, possible delivery. Chambersburg, PA. 717-438-2515.

TRUCKS & AUTOMOBILES

CABOVER TRUCKS 8610

2013 PROSTAR PLUS, day cab, 15L CAT, rust free, 259000miles, new breaks and tires. Lynchburg, OH. 937-364-2337.

OTHER 8690

1962 FORD F700 TRUCK, only 80000 original miles, 1600 gallon tank, roll back capable. Charles Myers. Zanesville, OH. 740-674-5132.

RECREATIONAL VEHICLES

MOTORCYCLES 9300

71 AC MINI BIKE, A1 cond, rechromed & repainted, sharp. Delphos, OH. 419-204-2506.

WANTED

WANTED 9800

WANTED: Add on remote kit for a NH TN75A tractor. Kimbolton, OH. 740-489-5320.

WANTED: JD 720 Tractor, diesel. Also JD front mount cultivators, 6 row. Bradford, OH. 937-423-1650.

LOOKING FOR FARM EQUIPMENT?

DOWNLOAD THE APP TODAY!

8am-5pm Mon-Fri & 8am-12pm Sat

Craigmyle

FARM EQUIPMENT

502-484-5560

www.craigmylefarmeq.com

Hwy 127, 6.5 Miles North of Owenton, KY



2018 Kobelco SK350LC-10, 2 Spd, 268 Hino Diesel, 2995 Hrs, Aux Hydr. \$159,500



2012 Komatsu PC 290LC-10, 4752 Hrs. Mech Thumb . . . \$98,500



2013 Wacker Neuson 9503-2, CHA, AWD, 2 Sp. Hydrostat Trans w/Lhd Rev. . . . \$58,500



2013 Volvo EC300DL, 3107 Hrs, 220 Hp, 36" Pads, 48" Bucket, Aux Hydr. \$82,500



2016 John Deere 672GP CHA, 6WD, 3616 Hours, 185 HP \$142,500



2012 Volvo G940B CHA, 2282 Engine Hours, 1883 Grader Hours, 146 Hp. \$98,500



2008 JD 1050J 1 owner, 5209 hrs. completely serviced, 80% undercarriage, 3 shank ripper \$159,500



2006 Case 450CT, 2064 Hrs., 2 Spd., Aux. Hyd., 82" Bkt. \$25,800



(2) 2018 & 2019 Bobcat S850 CHA, 191 Hrs, 2 Spd, Pilot Controls. \$48,500



2016 Yanmar T175-1, 1595 Hrs., ROPS, 1578 Hrs., 2 Sp. \$25,800



2016 Rayco C200, 1516 Hrs, 200 Eng HP, Air Seat, w/Winch. \$139,500



2017 Gehl VT320, CHA, 2 Speed Trans, 950 Hrs \$49,500



2006 Genie GTH1056, 2895 Hrs \$52,800
2014 Genie 5519, 2434 Hrs \$43,800



Nissan CYB02L-25S, ES Electric Forklift \$3,800



2010 CAT 2EP6000, 2379 Hrs. 1 Owner Side Shift, Pwr Pallet Fork ADJ, 60" Forks . . . \$14,500



2009 Hyster H60FT, Cab w/Heat, 7874 Hrs, 60" Forks w/Sideshift & Hydraulic Squeeze . . . \$12,900



2006 Marrelli 440 Cat C18 Pwr Generator, Cat C18 787 Hp, 440 KW Generator, 20172 Hrs . . . \$18,500



2009 Challenger MT535B, w/ Diamond side arm mower, Dyna Shift w/Left Hd Rev, 2020 Hrs...\$69,500



2018 JD 6105E Stock CHA, 24X12 Trans w/LH Rev, Alamo 48" mower... \$76,500



2012 Challenger MT475B, Diamond side arm mower MFWD, Dyna Shift w/LH Rev, 1616 Hrs...\$79,500



2005 GMC W5500 TrucKat 29093 Miles, Isuzu Diesel, Auto Trans...\$69,500



2005 MAC Frameless Dump Trailer, 39' Tandem axle, Aluminum, New Roll Over Vinyl Tarp...\$29,500



2015 Landoll 865SPS, 55 Ton, 102'x53', Hyd Detachable Neck, 12' Swing out Outriggers...\$78,000



1998 Claas Quadrant 1200, Large Square Baler, 2.25X4X8 Bales...\$17,500



2014 New Holland 330, 3x3x8 bale size, 24,900 bale count, crop cutter, auto acid kit...\$56,500



2018 Kubota BV4160F Premium, 4X5 Variable Chamber, 3556 Bales, 540 PTO, 79" Hydr Pick Up...\$22,500



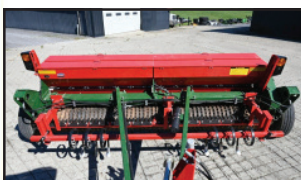
2014 New Holland 240, Speedrower, Hydrostatic Drive, 710 Hrs...\$95,000



2017 Kubota DMC8028R, swivel hitch, rubber rolls, 9'2 cut barely used...\$18,500



Rowse 300 Scraper 3 Cubic Yard Capacity, 8' Cutting Width...\$4,800



Brillion Seeder 10" Sure Stand Seeder...\$13,500



2004 John Deere 1510C Scraper Pan, 10' Cutting Width, 11'10" Overall Width...\$44,500



2015 Kubota TE4052T, 4 Basket Tedder, Hydraulic Wings, 16X6.50-8 Tires...\$6,850



2016 Kubota M7-171 Premium CHA, MFWD, KVT Trans w/Lhd Rev 2744 Hrs . . .\$66,500



2016 Kubota M7-151, 24X24 Pwrshift w/Lhd Rev, 599 Hrs \$78,500



2015 Kubota M5-111, CHA, MFWD, 8X8 Trans w/LH Hyd. Rev., 1325 Hrs. \$44,800



2016 Kubota M6s-111, CHA, 16X16 Trans.w/LH Rev., 96*Kubota LA1944 Loader, 259Hrs . . .\$52,500



2013 Challenger MT655D, CVT Trans, 2573 Hrs, front 3pt, Pto \$115,000



1994 Ford 6640 Powerstar Open Station w/Rops, 2WD, 16 Spd Pwr Shift w/Rhd Rev, 1175 Hrs . \$22,800



2016 McCormick X6.420 CHA, MFWD, 36 Spd w/Lhd Rev, 1610 Hrs . . . \$49,800



2014 Weidemann 3070 CX80T CHA, 2 Spd Trans, 58 Act Hrs . . .\$59,800



2016 Kubota RVT-X1100C, 4X4, Diesel, Hydrostat Trans, 3088 Miles, 866 Hrs . . \$15,900



2016 Case DV213 Asphalt Compactor, ROPS w/Canopy, 82Hrs . . .\$69,800



2008 Chev 3500 Silverado LTZ, Duramax Diesel, 4X4 Allison Auto trans, 67,601 Act Miles, Crew Cab Dually . . \$38,500



1989 Ford Bronco XLT Metropolitan 89321 Miles, RARE 4 Door, 351 Engine, Auto Trans . . \$17,500

8am-5pm Mon-Fri & 8am-12pm Sat

Craigmyle

FARM EQUIPMENT

502-484-5560 • www.craigmylefarmeq.com

Hwy 127, 6.5 Miles North of Owenton, KY



2004 JD 7520 Open Station, ROPS, Canopy, 16 Sp. P/Q Trans, 566 Actual Hrs... \$69,500



2005 JD 7220, ROPS w/canopy, 16 Spd, P/Q w/LH Rev, 1913 Hrs... \$46,500



2009 JD 7130 CHA, MFWD, 24 spd., P/Q w/LH Rev, 1063 Act Hrs... \$89,500



2008 John Deere 6430, 16 Spd. P/Q w/LH Rev, 1 Owner, 1158 Hrs... \$69,800



2013 JD 6115D, 9X9 Trans w/Lhd Rev, 768 Hrs, JD 310 Loader... \$56,500



2017 JD 6105E, 12X12 Trans w/Lhd Rev, 1276 Hrs... \$49,800



2014 JD 6105M ROPS w/Canopy, 16 Sp. P/Q w/Lhd Rev, 3587 Hrs... \$39,800



2013 Case IH Magnum 210 CHA, MFWD, 19X6 Pwr Shift Trans w/Lhd Rev 1432 Hrs... \$94,500



2011 Case IH Magnum 340 CHA, 19X4 Pwr Shift Trans w/Lhd Rev, 3144 Hrs... \$94,800

U.S. Farmer

The Farm & Country Buyer's Guide, reaching farmers and rural property owners across Ohio and Kentucky, with distribution in Indiana, Tennessee and Illinois.

Next edition
OCTOBER 2020

Ad booking deadline:
Sept. 21, 2020 at 5 pm

Ad material:
Sept. 24, 2020 at 12 pm

A **Farms.com** Company

Contact us at:
1-888-531-1511 x910

Presented STD
US Postage PAID
Permit No. 57
Watertown, NY 13601

U.S. Farmer

195 Raymond Hill Rd., Suite D
Newnan, GA 30265
1-888-531-1511

www.usfarmer.com